

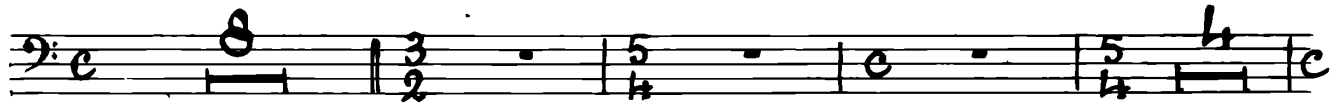
LES BANDAR-LOG

TUBA

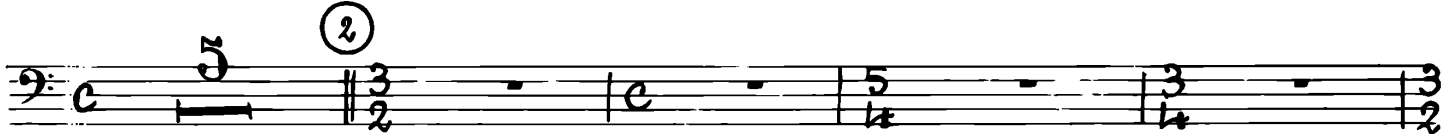
Ch. KECHELIN

Calme

①



②



Cédez un peu ③ Trp.



Trb.



④

⑤



Cédez un peu ⑥ Trp. animato



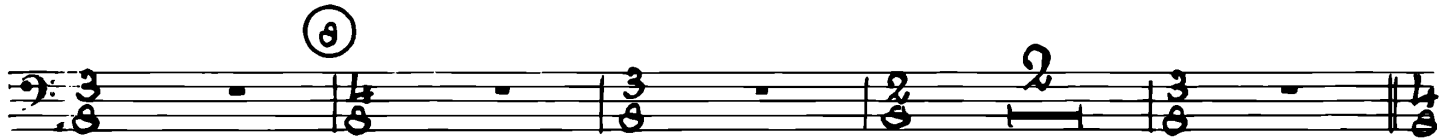
⑦

Trp.

Trb.

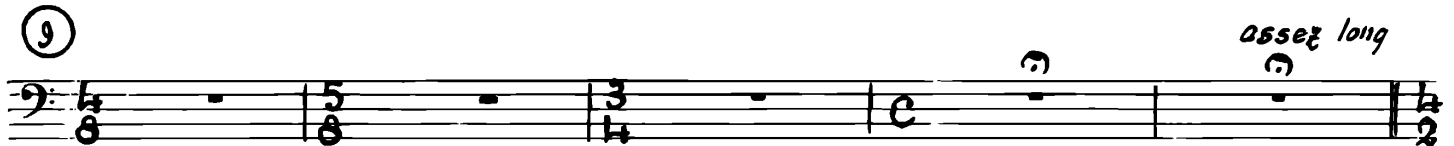


⑧



⑨

assez long



Tuba

⑩ Retenu court Vcl. Un peu plus vite court Tuba Solo
 presser peu a peu Allegro (d. = d) mf
 ⑪ To 10 court (d = d) Mettez la sourd. mf
 ⑫ Moderato (d = d) Tuba Clarinettes Sourd. mf Stez la sourd.
 (d. = d) ⑬ (d = d.)
 ⑭ Trb. 3 3 3
 ⑮ Bon solo Timb. Allegro
 Saxo sopr. (d = d) ⑯ 2 Vcl. Soli
 Altos Tuba mp
 ⑰ poco cresc. sost.
 ⑱ un peu plus large piii p

20 Reprendre du mouv^t

Mettez la sourd.

21 (♩ = ♩)

Cordes

22 Fl. Piccolo

clar.

Tuba

sourd. pp

23

vous

24

All^o brusque

(sourd.) ff sec

25

silence

env. 2 mesures

26

silence

env. 2 mesures

26 Maestoso

Tuba Solo

(sourd.) f

27 (♩ = ♩)

ôtez la sourd.

Tuba

(28) Tr.b. 1.2

3e Tr.b. (29) Tuba

(30) 10

(31)

(32)

(33) Calme vcl.

(34) Fl O

Bon (35) (36)

Mettez la sourdine

(37) (38) Vcl. pp

(39) Cors Bois Cl. B. Saxo Ténor Bois

Tuba (40) (41) Sourd. mp sec mf ôtez la sourd.

(42) 2

43

mp cresc. (♩ = ♩) *f* *mf* *en pressant*

mf

44 *con fuoco* *f*

45

Mettez la sourd. *f*

Stesso T! *f* *cresc.*

46 *mf* *mp*

mf *f sost.*

47 *48 un peu retenu* *ôtez la sourd.*

f *ff* *f*

49 *f*

50 *51* *mp* *dim.* *pp*

52 *f* **TACET**