

**GIOACHINO**  
**ROSSINI**  
*(1792-1868)*

**IL VIAGGIO A REIMS**  
Sinfonia

**TRUMPET I**

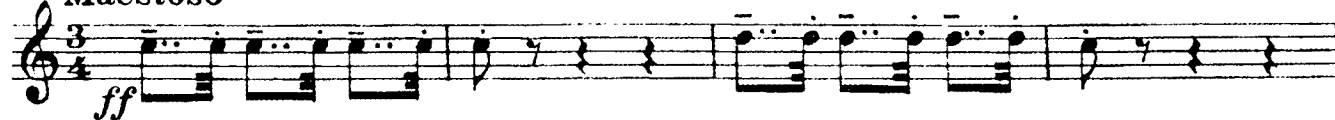
# IL VIAGGIO A REIMS

SINFONIA

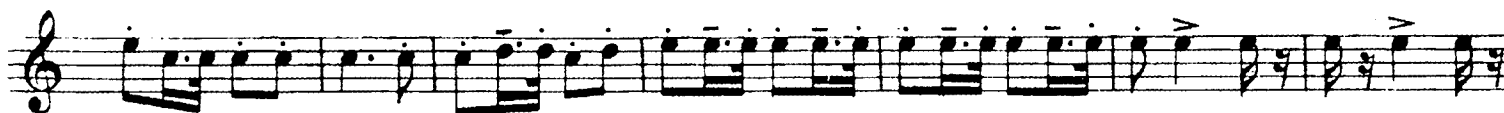
G. ROSSINI

## I. TROMBA in LA

Maestoso



Allegretto moderato



(Cl.-Cr.-Pizz.)

# I. TROMBA in LA

*p* 3 3 3 3 3 3

*mf* 3 3 3 3 3 3

10 *f*

*p* *cresc.* *f*

11 *ff* *f* *ben ritmato*

8 1 *ff* *ff* *rall.*

12 *a tempo* *Triang. pp* *(segue)* *f* 13 *(Cr.-Legni-Triang.)* *p* 3 1

2 3 4 5 6 7 3 3 3 3 3 3

8 9 10 11 12 13 3 3 3 3 3 3

14 14 *f*

15 *ff* *f* *cresc.*

*ff* *fff*

**GIOACHINO**  
**ROSSINI**  
*(1792-1868)*

**IL VIAGGIO A REIMS**  
Sinfonia

**TRUMPET II**

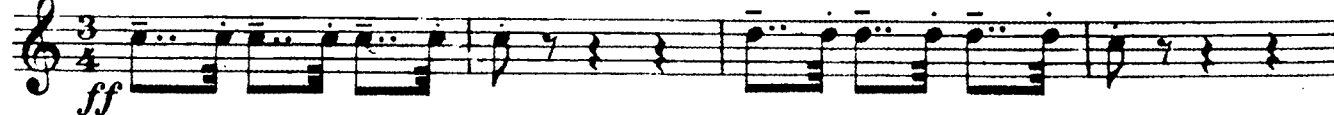
# IL VIAGGIO A REIMS

SINFONIA

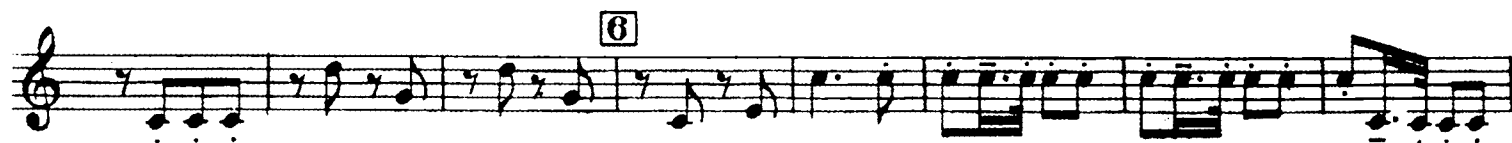
G. ROSSINI

## II. TROMBA in LA

Moderato



Allegretto moderato



II. TROMBA in LA

*p*

*mf*

**10**

*f*

*p* *cresc.*

*ff*

*f* *ben ritmato*

*ff*

**12** *rall.* *a tempo*

Triang. *pp* (*seppu*)

**13** *f* (Cr.-Legni-Triang.)

*p*

*mf*

**14**

*f*

*p*

**15** *ff* *f* *cresc.*

*ff*

Detailed description: This page contains the musical score for the Tromba in LA part, measures 10 through 15. The score is written on ten staves. Measures 10-11 feature a series of triplet eighth notes, starting with a piano (*p*) dynamic and moving to mezzo-forte (*mf*) and then forte (*f*). Measure 10 is marked with a box containing the number 10. Measure 11 includes a crescendo (*cresc.*) and a dynamic of *f*. Measures 12-13 are marked with a box containing the number 12 and include a *rall.* (rallentando) and *a tempo* marking. Measure 12 features a *pp* (pianissimo) dynamic and a *Triang.* (triangle) instruction. Measure 13 includes a *f* dynamic and a *(Cr.-Legni-Triang.)* instruction. Measures 14-15 continue with triplet eighth notes, starting with a dynamic of *f* and moving to *p* and then *ff* (fortissimo). Measure 14 is marked with a box containing the number 14. Measure 15 includes a *ff* dynamic and a *cresc.* (crescendo) marking.