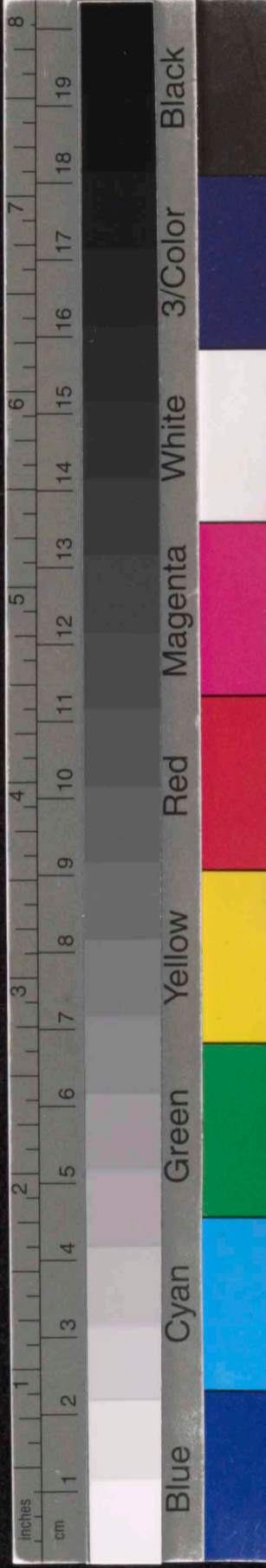
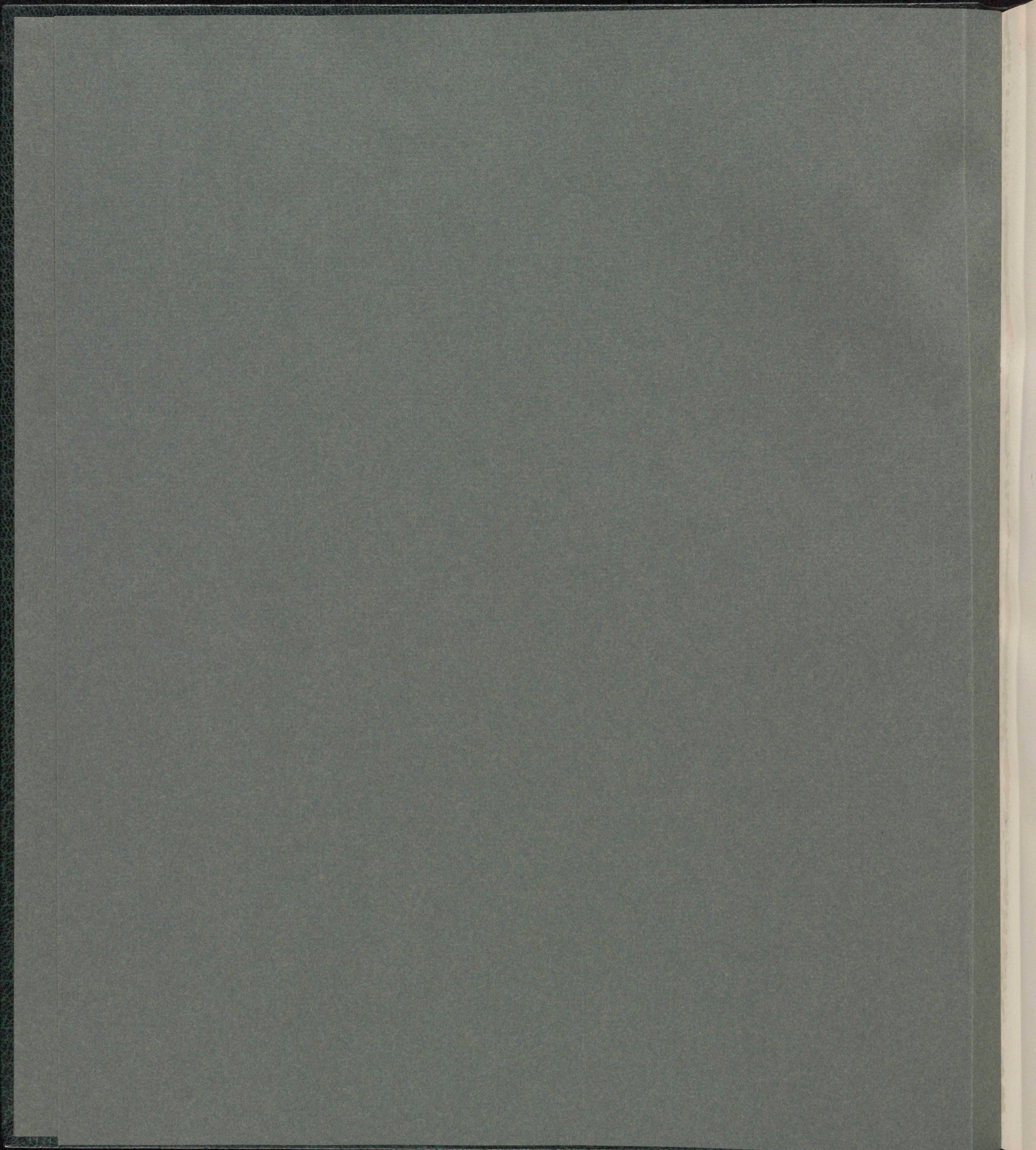
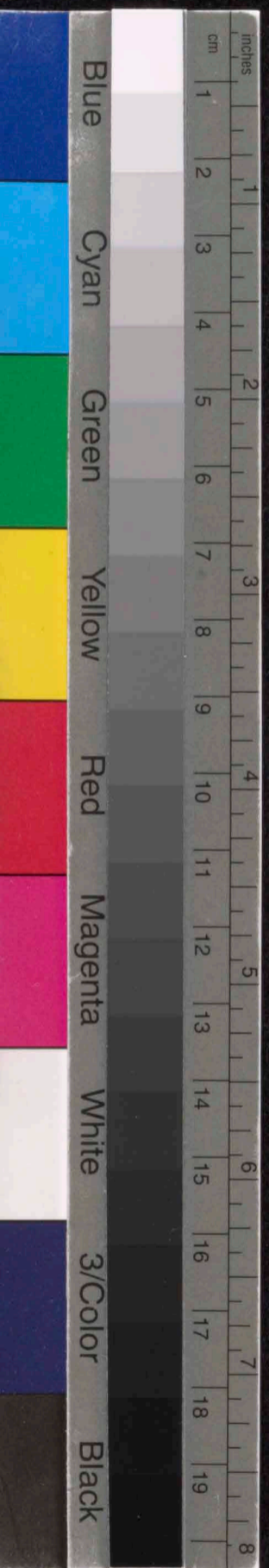
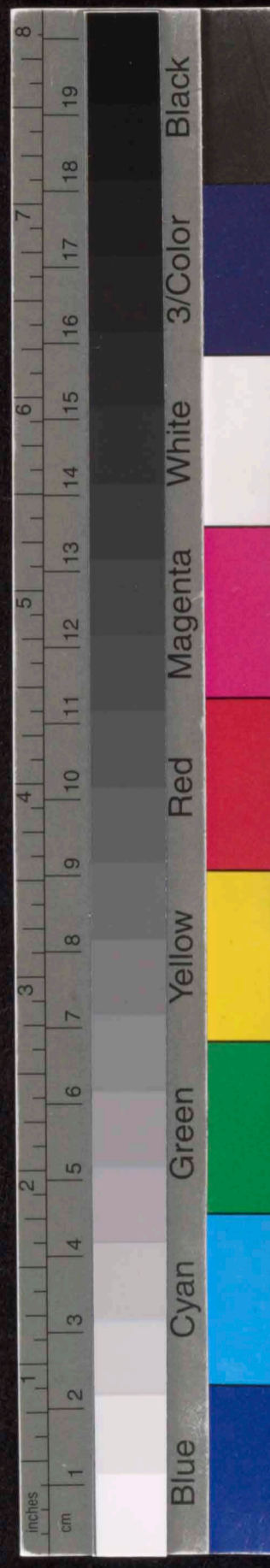
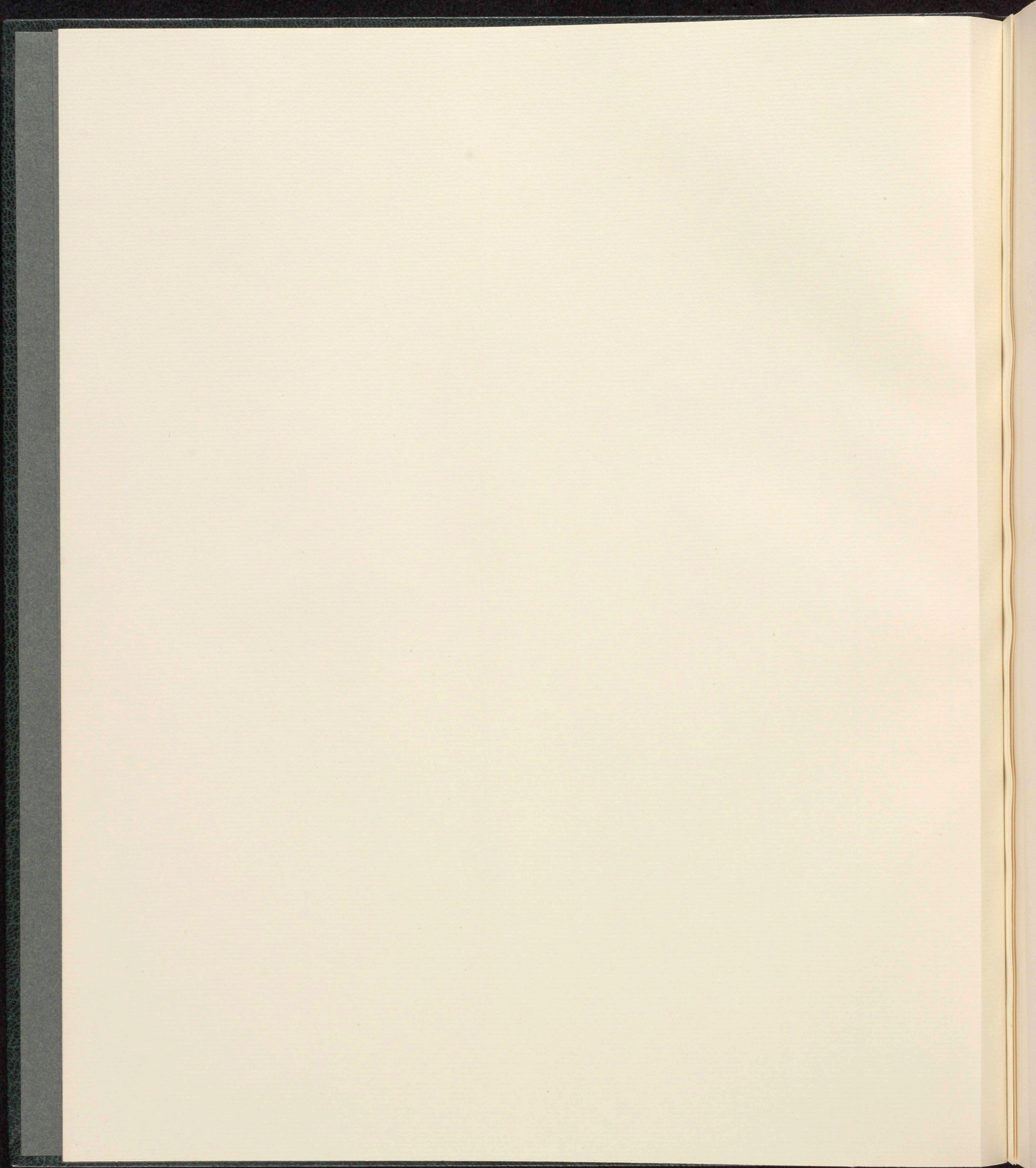
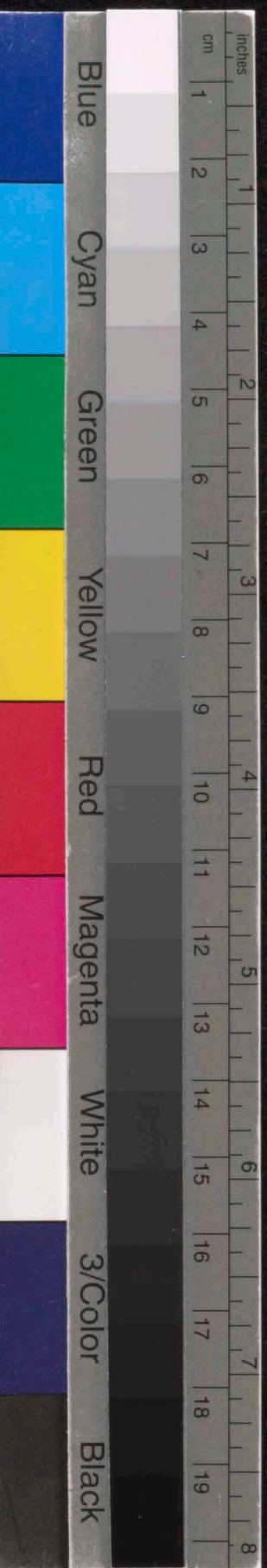


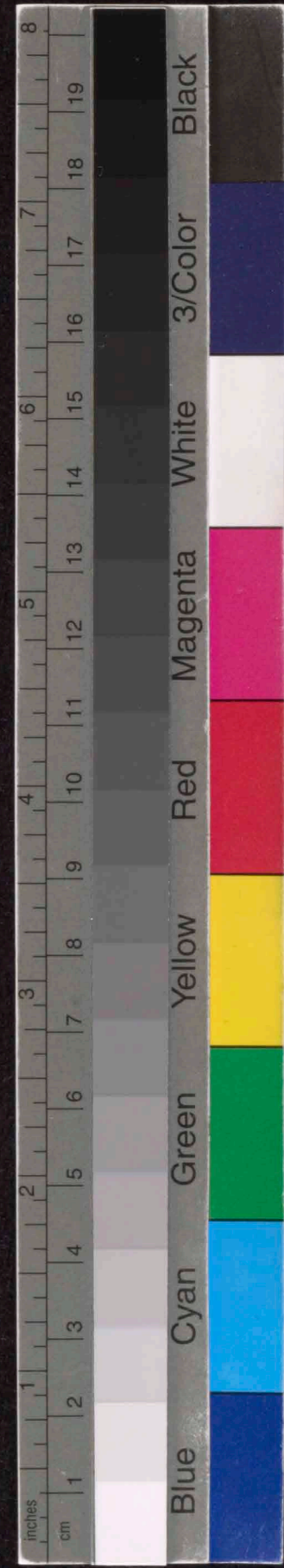
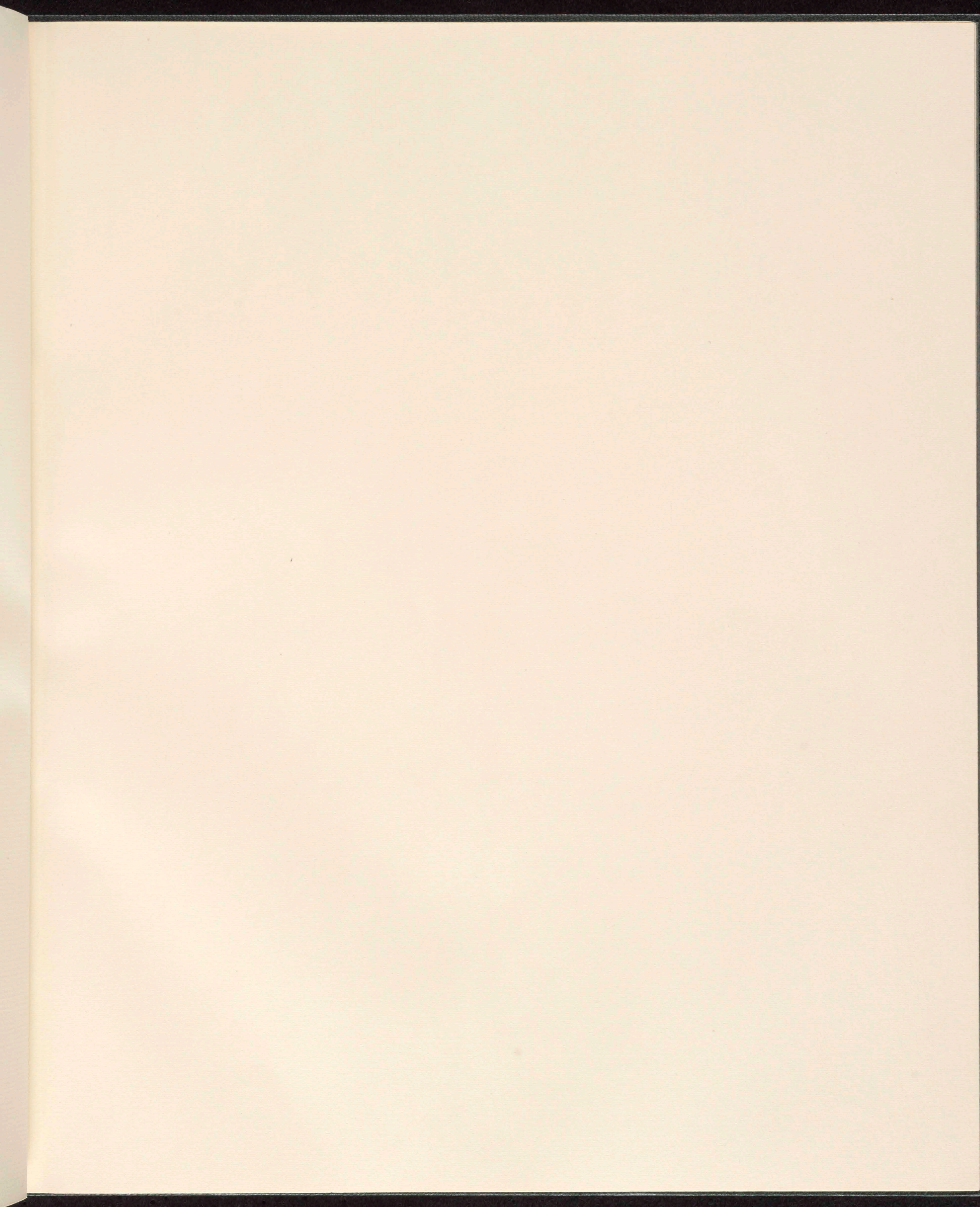
20 Columbia

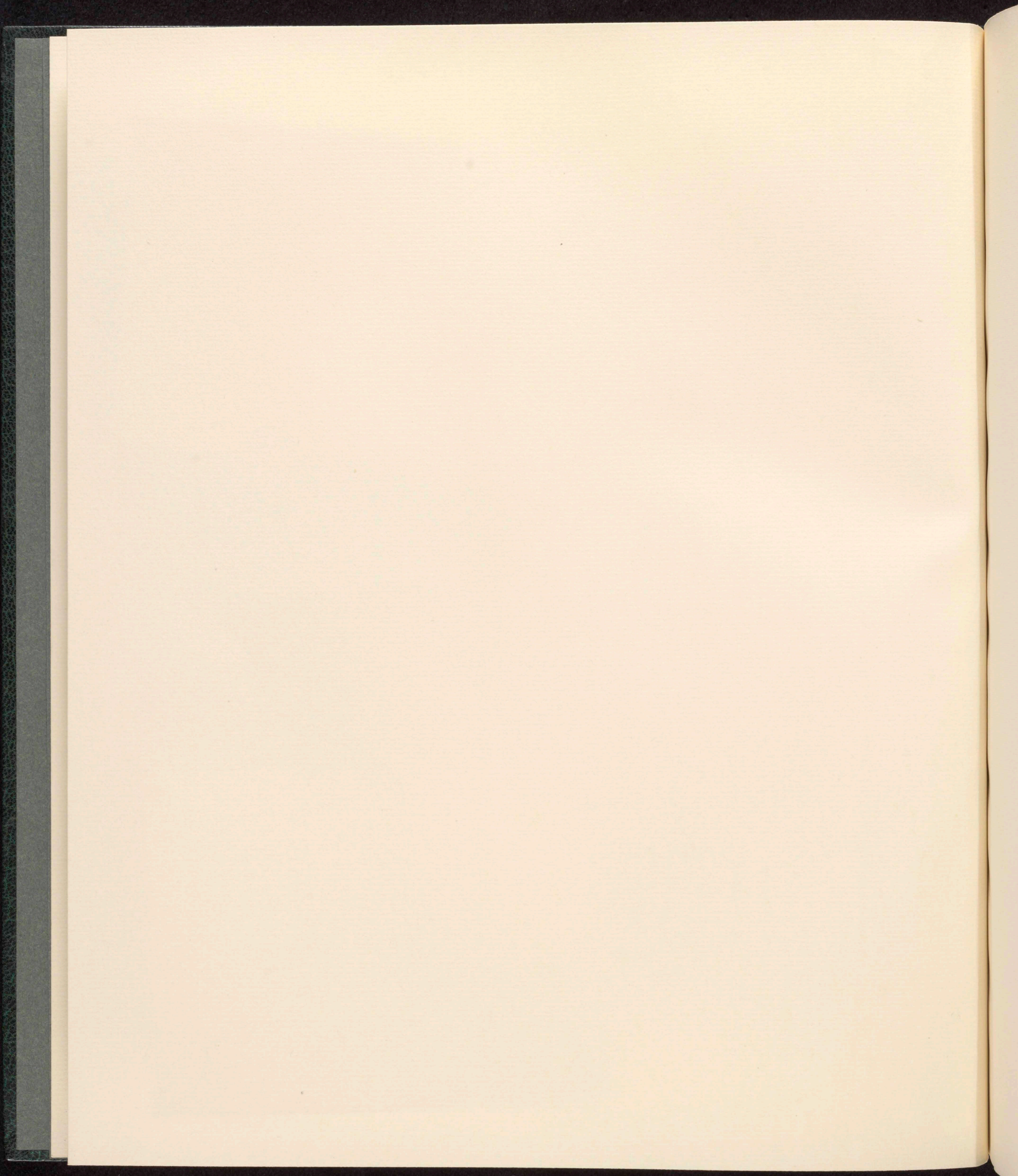
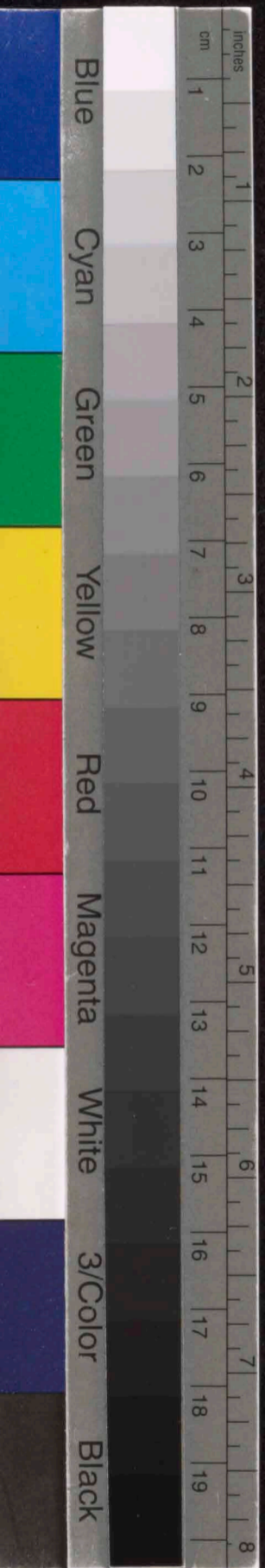


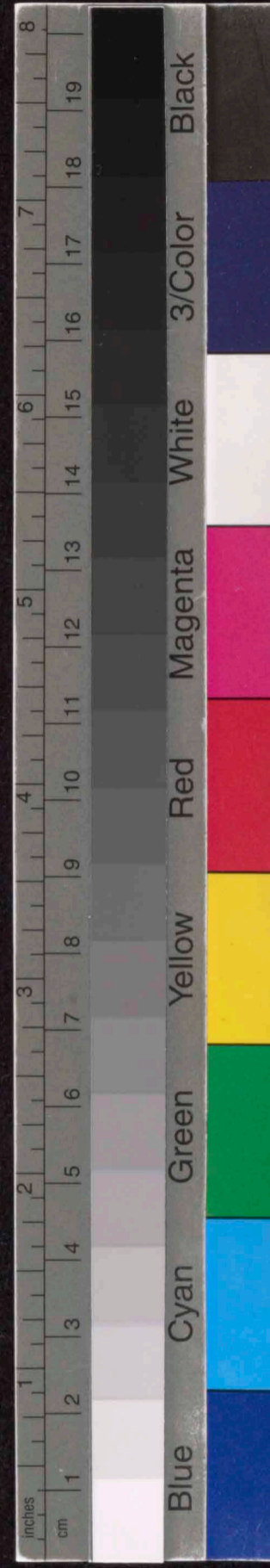
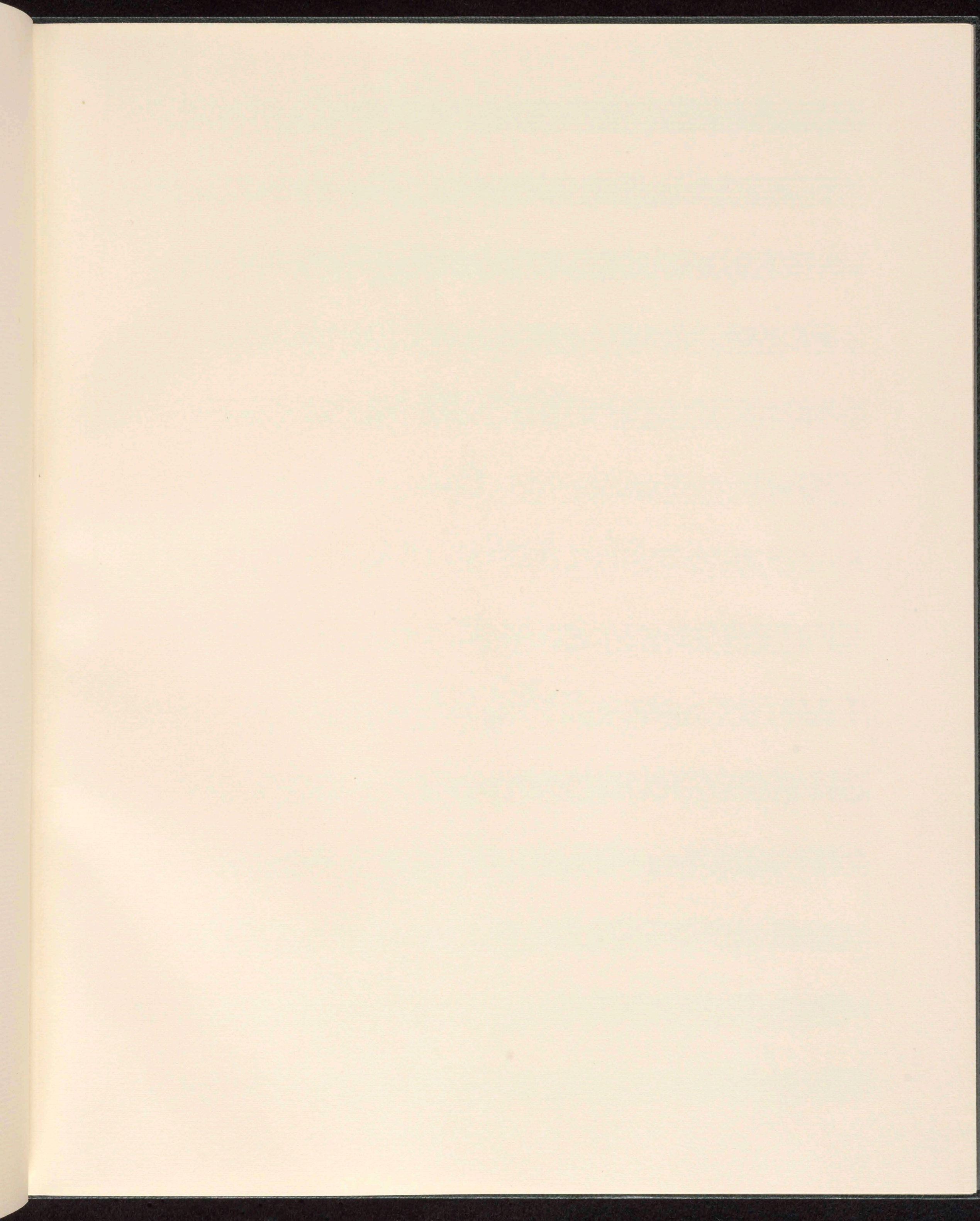


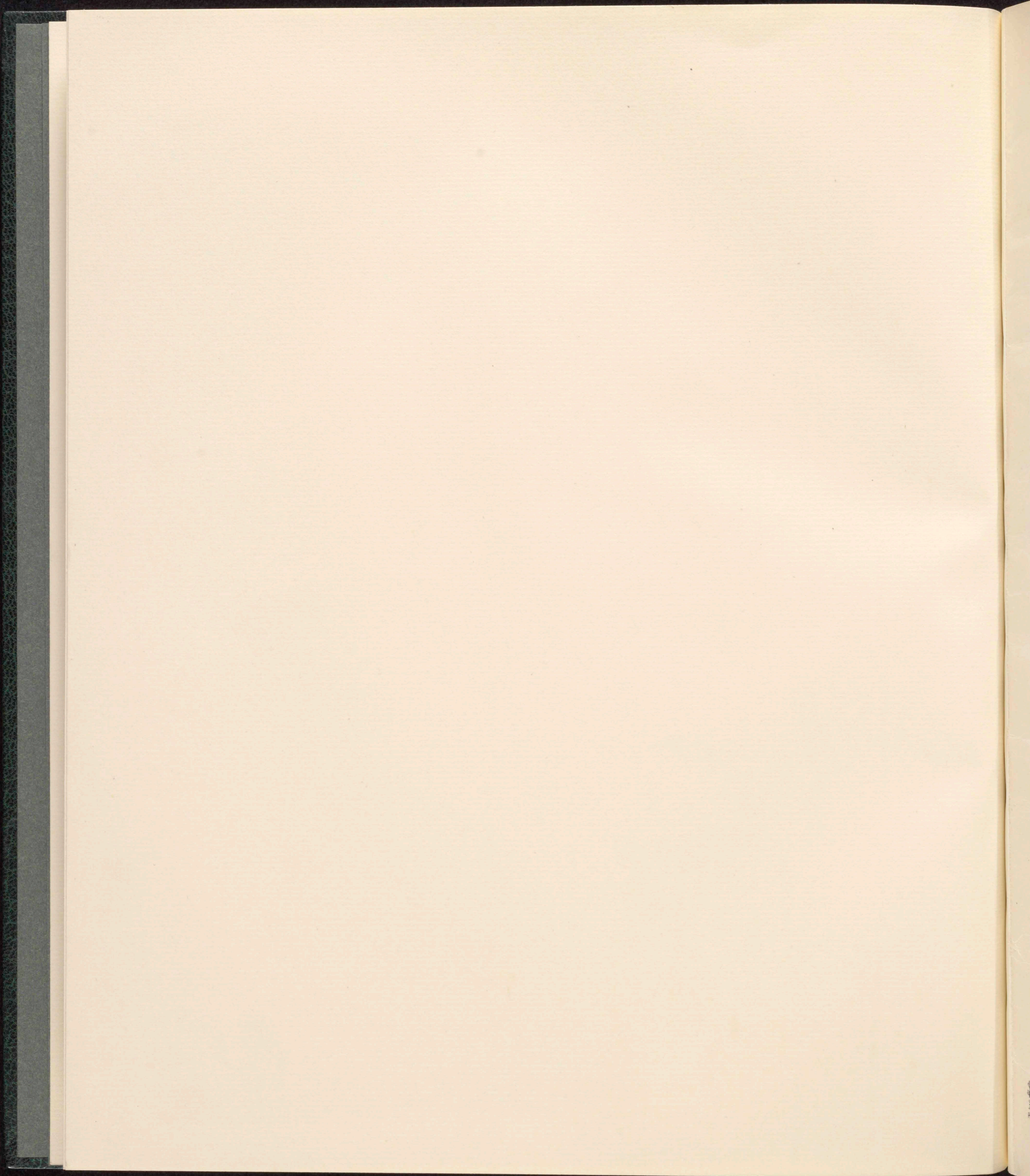
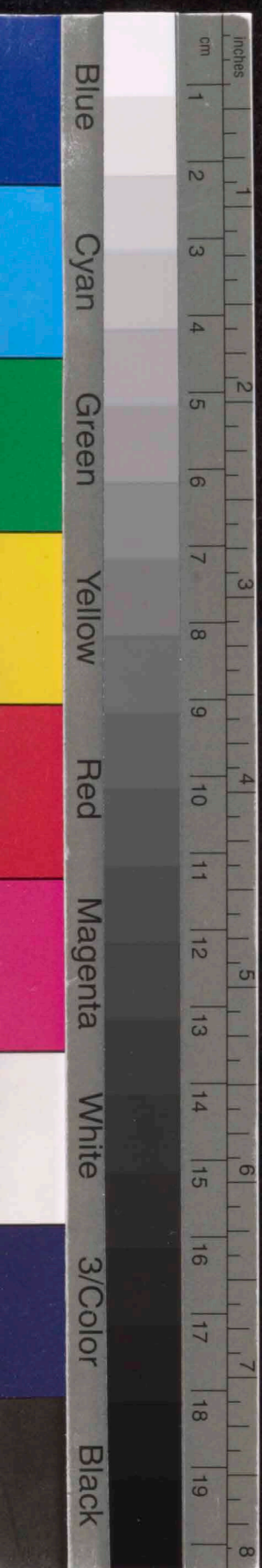












Drei Lieder

für

Gesang, Es-Klarinette u. Gitarre

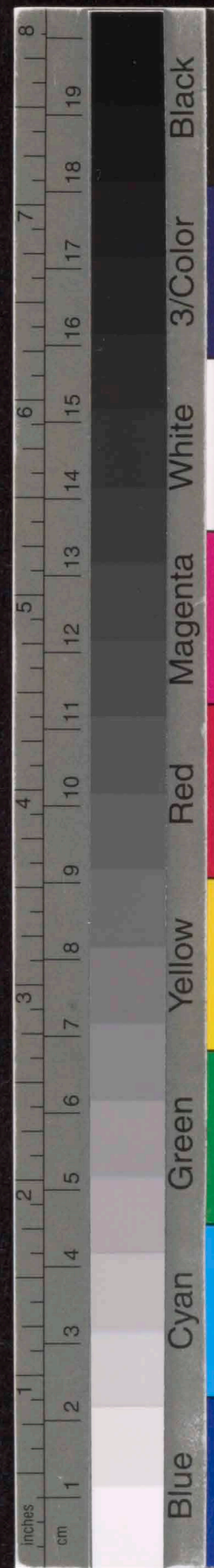
von

Anton Webern

op. 13



Protokoll-Schutzmarke
N^o 3
14 linig.



Herrn Direktor Emil Hertzka

in

Verehrung u. Dankbarkeit

Anton Webern

Mödling, Mai 1926

I.

Anton Webern, op. 18

Sehr ruhig (♩ = ca 54)

Gesang

rit..... tempo

Scha-tzel klein, mußt nit trau-rig sein, eh' das

Klarinette
in Es*

Gitarre*

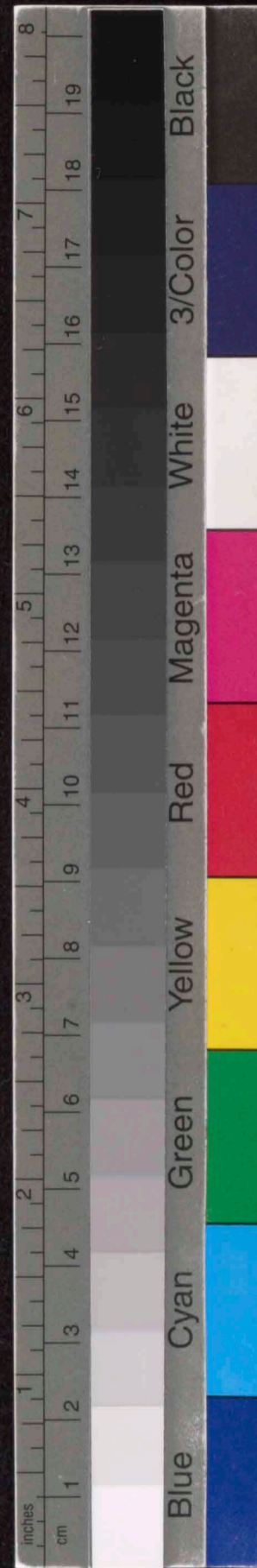
rit..... tempo

Jahr ver-geht, bist du mein. Eh' - das

Kl

St

* Klingt wie notiert.



Handwritten musical notation for the first system. The vocal line is in treble clef with a key signature of one flat (B-flat). It begins with a piano (*p*) dynamic and includes a triplet of eighth notes. The piano accompaniment is in bass clef, starting with a piano (*p*) dynamic and featuring a triplet of eighth notes. The lyrics are: "Jahr ver - geht, - grünt der Ros - ma - rin, - sagt der".

Jahr ver - geht, - grünt der Ros - ma - rin, - sagt der

Handwritten musical notation for the second system. The piano accompaniment continues in bass clef, with dynamics ranging from piano (*p*) to piano-piano (*pp*). It includes various chordal textures and triplets. The lyrics are: "Pfar - rer laut: - nehmt's euch hin. - Grünt der".

Pfar - rer laut: - nehmt's euch hin. - Grünt der

Handwritten musical notation for the third system. The vocal line is in treble clef, starting with a piano (*p*) dynamic and including a triplet of eighth notes. The piano accompaniment is in bass clef, starting with a piano (*p*) dynamic. The lyrics are: "Pfar - rer laut: - nehmt's euch hin. - Grünt der".

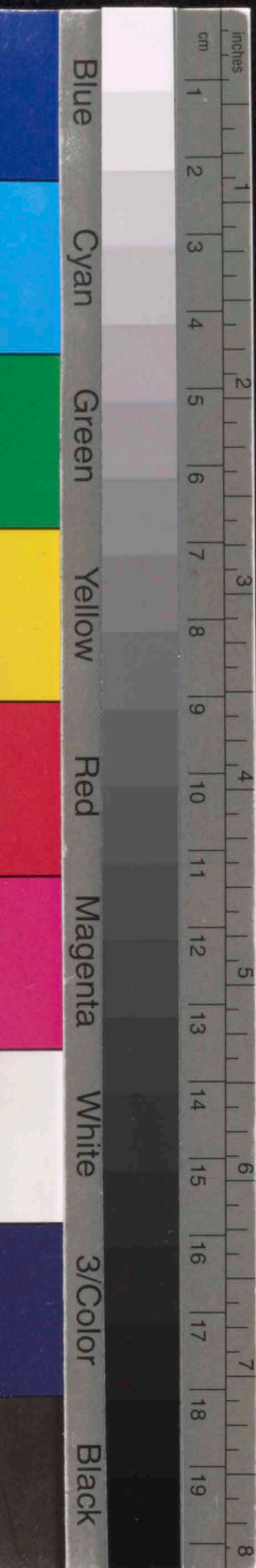
Handwritten musical notation for the fourth system. The piano accompaniment continues in bass clef, with dynamics ranging from piano (*p*) to fortissimo (*ff*). It includes various chordal textures and triplets. The lyrics are: "Ros - ma - rin, - grünt der Myr - ten - schauß - und der".

Ros - ma - rin, - grünt der Myr - ten - schauß - und der

Handwritten musical notation for the fifth system. The vocal line is in treble clef, starting with a piano (*p*) dynamic and including a triplet of eighth notes. The piano accompaniment is in bass clef, starting with a piano (*p*) dynamic. The lyrics are: "Ros - ma - rin, - grünt der Myr - ten - schauß - und der".

Handwritten musical notation for the sixth system. The piano accompaniment continues in bass clef, with dynamics ranging from piano (*p*) to fortissimo (*ff*). It includes various chordal textures and triplets. The lyrics are: "Ros - ma - rin, - grünt der Myr - ten - schauß - und der".

tempo



rit.

Na — gul — stock blickt im Flau.

Kl

Gt

II.

Erlösung
 (aus „Des Knaben Wunderhorn“)

Sehr bewegt (♩ = ca 100)

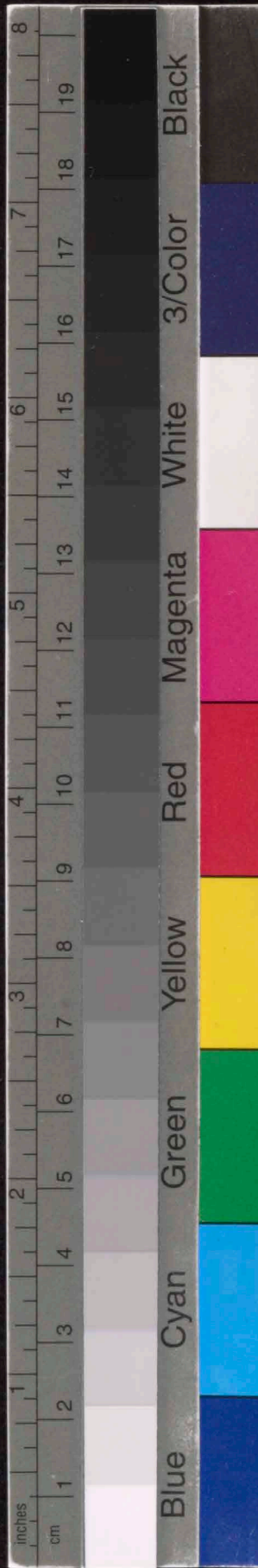
Gesang

Maria

Mein Kind, sieh an die

Klarinette in Es

Gitarre

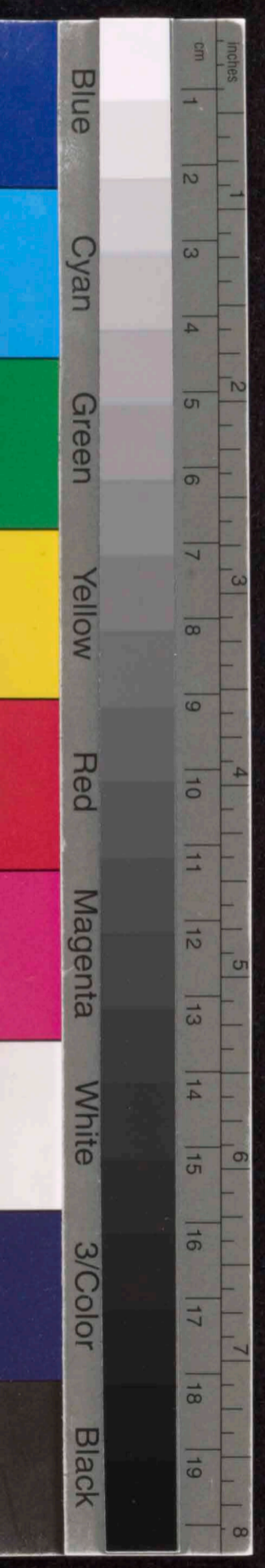


Brii — ste mein, — kein Sün — der laß ver-

rit. tempo

lo — ren sein. Mut — ter, sieh an die

Wun — den, die ich für dein Sünd trag



rit. ... etwas breiter (♩ = ca 80)

al — le Stun — den. Va — ter, laß dir die

Kl
St

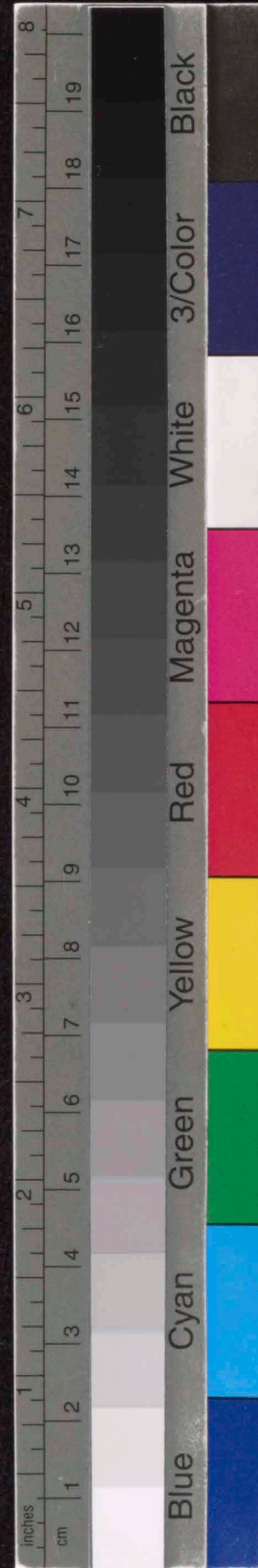
Wun — den mein, — ein O — pfer für die

Kl
St

rit. ... tempo I. (♩ = ca 100)

Vater
Sün — de sein. Lüßig, lie — be

Kl
St



Handwritten musical notation on a single staff. It features a vocal line with lyrics and a piano accompaniment. The lyrics are "Lohn mein, al les was du be-". The music includes various notes, rests, and dynamic markings such as *p* and *pp*.

Lohn mein, al les was du be-

Handwritten musical notation on a single staff. It features a vocal line with lyrics and a piano accompaniment. The lyrics are "rit - - - - - accel... tempo". The music includes various notes, rests, and dynamic markings such as *pp*, *mf*, and *ff*. There are also markings for *rit* and *tempo*.

rit - - - - - accel... tempo

Handwritten musical notation on a single staff. It features a vocal line with lyrics and a piano accompaniment. The lyrics are "gehort, das soll sein." The music includes various notes, rests, and dynamic markings such as *f* and *ff*.

gehort, das soll sein.

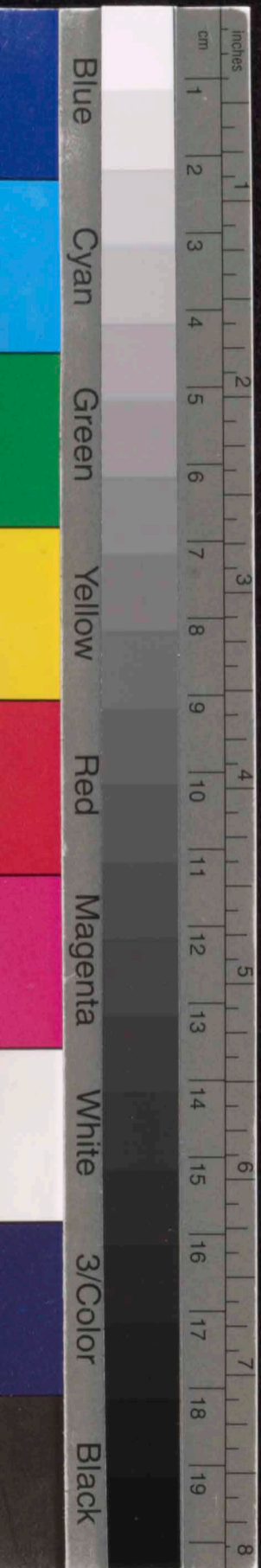
Handwritten musical notation on a single staff. It features a vocal line with lyrics and a piano accompaniment. The lyrics are "gehort, das soll sein." The music includes various notes, rests, and dynamic markings such as *f* and *ff*.

17

18

17

18



III.

Langsam (♩ = ca. 56)

Gesang

Handwritten musical notation for the vocal line, starting with a treble clef and a 3/8 time signature. The staff contains several measures of music, including rests and notes.

Klarinette in Es

Handwritten musical notation for the Clarinet in E-flat. It features a treble clef, a 3/8 time signature, and includes dynamic markings such as *pp* and *ppp*. There are also performance instructions like *üppig/gut* and *rit...*.

Gitarre

Handwritten musical notation for the guitar. It uses a treble clef and a 3/8 time signature, with various rhythmic patterns and dynamic markings like *pp*.

rit.....

ppp

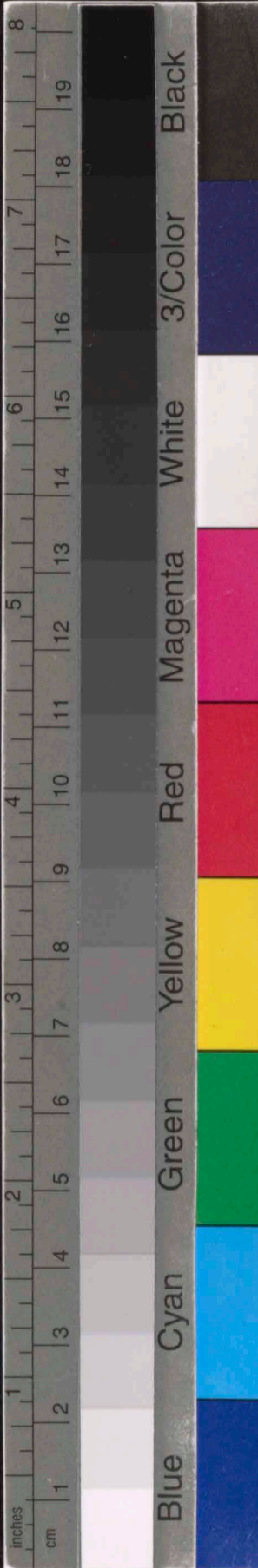
A-

Xl

Handwritten musical notation for the Xl instrument (likely a trumpet or trombone). It features a treble clef and includes dynamic markings like *ppp* and *pp*.

Sa

Handwritten musical notation for the Sa instrument (likely a saxophone). It uses a treble clef and includes dynamic markings like *ppp* and *pp*.

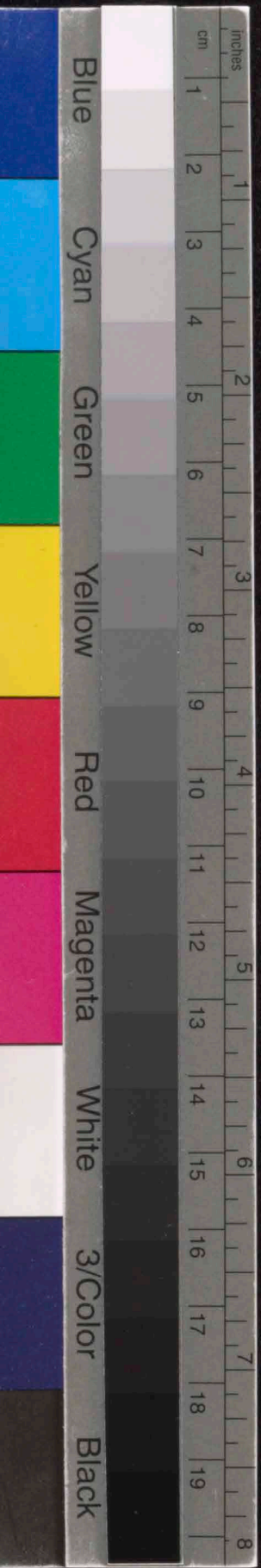


tempo

Handwritten musical score for the first system, measures 1-6. The vocal line (top) includes lyrics: *- ve, Re - gi - na coe - lo - rum, A - ve,*. The piano accompaniment (middle) is for Treble (TR) and Bass (ST) clefs. It features a complex harmonic structure with triplets, slurs, and dynamic markings such as *pp* and *ppp*. Measure numbers 5 and 6 are indicated above the TR staff.

Handwritten musical score for the second system, measures 7-8. The vocal line (top) includes lyrics: *Do - mi - na An - ge - lo - rum:*. The piano accompaniment (middle) continues with complex chords and triplets. Measure numbers 7 and 8 are indicated above the TR staff. Dynamic markings include *pp* and *ppp*.

Handwritten musical score for the third system, measures 9-10. The vocal line (top) includes lyrics: *Sal - ve ra - dix, sal - ve por - ta, ex qua mun - do*. The piano accompaniment (middle) features a change in time signature to $\frac{2}{8}$ at the end of measure 10. Measure numbers 9 and 10 are indicated above the TR staff. Dynamic markings include *pp* and *ppp*.



Handwritten musical score for the first system, featuring a vocal line and piano accompaniment. The vocal line includes the lyrics "lux est or-ta: Gau de, Vir-go glo-ri-". The piano part includes dynamic markings such as *pp* and *f*.

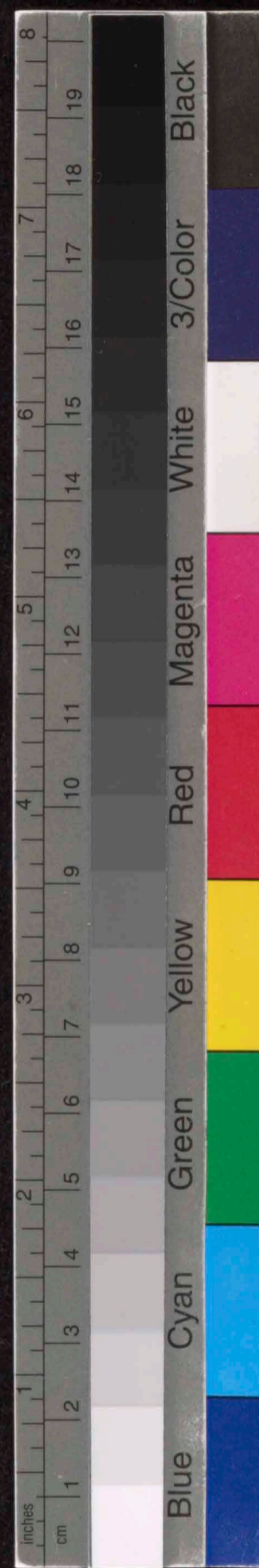
Handwritten musical score for the second system, including vocal and piano parts. The piano part features complex chordal textures and dynamic markings like *pp*, *p*, and *f*. The system concludes with the instruction *rit.*

Handwritten musical score for the third system, primarily a vocal line with the lyrics "o - sa, su - per om - nes spe - ci - o - sa!".

Handwritten musical score for the fourth system, including vocal and piano parts. The piano part features intricate chordal patterns and dynamic markings such as *pp* and *f*.

Handwritten musical score for the fifth system, starting with the instruction *etwas breiter (P. ca 100)*. It includes a vocal line with the lyrics "va - le, o val-de de - co - ra, et pro".

Handwritten musical score for the sixth system, including vocal and piano parts. The piano part features complex textures and dynamic markings like *f* and *mf*.



molto rit. $\text{♩} = ca 56$

f

no — bis Chri-stum ex-o-ra.

18

mf

19

f

tempo I. ($\text{♩} = ca 56$)

20

21

19 25

