

Harpa

(Orchester II)

ORPHÉE ET EURIDICE

Oper in 3 Akten

Christoph W. Gluck

Ouverture - Tacet

ACTE PREMIER

ERSTER AKT

Tacet

Fin du 1^{er} Acte

Ende des ersten Aktes

ACTE DEUXIEME

ZWEITER AKT

Scène I

Szene I

Maestoso

Musical staff with notes and rests, including dynamic markings like p and f.

Orch. I

Viol. I

Musical staff with notes and rests, including dynamic markings like p and f.

Musical staff with notes and rests, including dynamic markings like p and f.

Prélude

Andante

20

22

Detailed description: This block contains the first two staves of musical notation for the 'Prélude' section. The first staff starts at measure 20 and ends at measure 22. The second staff continues from measure 22. The music is written in treble clef with a key signature of one flat (B-flat) and a common time signature (C). The tempo is marked 'Andante'. The notation consists of eighth and sixteenth notes, some beamed together, and rests. There are some handwritten annotations: a '20' above the first measure, a '22' above the start of the second staff, and a '10' below the first measure. A double bar line is present at the end of the second staff.

Chœur - Air de Furie - Tacet

Chœur

57

Très marqué

19

Detailed description: This block shows the beginning of the 'Chœur' section at measure 57. The music is in treble clef with a key signature of one flat and a 3/4 time signature. It features a series of rests, with a '19' written below the first rest. Above the first measure, there is a handwritten '57' and the tempo marking 'Très marqué'. A fermata is placed over the first measure, and another fermata is placed over the second measure. The notation continues with more rests and a final measure with a '10' written below it.

Orch. I

87 ob. I

Detailed description: This block contains the first staff of musical notation for the 'Orch. I' section, specifically for the first oboe (ob. I) starting at measure 87. The music is in treble clef with a key signature of one flat. The notation consists of a series of eighth notes, some with accents, and a final measure with a sharp sign and a common time signature.

92

Detailed description: This block contains the second staff of musical notation for the 'Orch. I' section, starting at measure 92. The music is in treble clef with a key signature of one flat. The notation consists of a series of eighth notes, some with accents, and a final measure with a sharp sign and a common time signature.

Un peu lent

96

98

101

104

107

110

113

116

4

Harpa

118



121



124



127



130



133



136



139



142

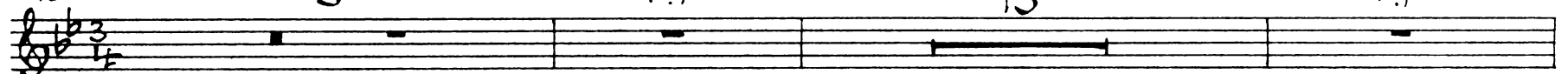


Chœur

145

Un peu lent 3

Moins lent 13



Harpa

163 Animé 8 orch I ob. I

175

177 Sans lenteur

180

184

188

192

196

Chœur

200 Un peu lent $\frac{1}{4}$

Orch. I
Viol.

221 Un peu lent

Tacet

Fin du II^e Acte
Ende des zweiten Aktes

ACTE TROISIEME

DRITTER AKT

Tacet

Fin de l'opéra
Ende der Oper