

SIXTH STRING QUARTET

Violoncello

I

BÉLA BARTOK

Mesto, ♩: ca. 92 13 Più mosso, pesante ♩: ca. 70 18

f *ff* *f*

(lunga) Vivace, ♩: ca. 140 (lunga) 2nd Vin.

cresc. *ff* *p, leggero* 1st Vin. 31 *p*

Via. 1st Vin. pizz. arco *p*

36 *mf* *p*

41 *cresc.*

47 *mf* *dim.*

53 *f* *sf* *p* *cresc.* 60

68 *f* *mf*

76 poco a poco rall. *dim.*

Violoncello

81

al Un poco meno vivo, $\text{♩} = \text{ca. } 120$

tr. *p* pizz. (sim.)

89

poco a poco

f sub. *p*

tornando

al

Vivacissimo, agitato, $\text{♩} = 180$

f in rilievo *mf* *f in rilievo* *p sub.*

99

109

f *p*

cresc.

p *f*

117

Ancora più vivo, $\text{♩} = 176$

mp *mf cresc.* *f*

1st Vin.

2nd Vin.

mf cresc.

126

ff *p*

mf *f*

137

Tempo I. $\text{♩} = 140$

mf *cresc.* *f*

144

mf *p*

150

II. un poco rall.

pp

1st Vin.

Violoncello

158
Pesante $\text{♩} = 120$

pp *ff* *f*

166
(lunga) Tempo I. $\text{♩} = 140$

ff *sempre ff* *p*

174 **180** **186**

194 **201** *mf* *dim.*

pizz. *p* **209**

217 *cresc.* *arco* **222** *ff*

Violoncello

231 *sim.*

237 242 *p*

247 *mp*

256

262 *pp* *poco cresc.* *dim.*

poco rall. *Un poco tranquillo,* 268 *pp* *p* *ca. 120*

(lunga) *Vivacissimo,* 276 *pp* *pp* *ca. 160-150*

282 *p*

tornando 287 *al Tempo I.* *ca. 140* *mp*

un poco rallent. 297 *(lunga)* *Vivacissimo,* *ca. 160* *pp* *pp* *pp* *pp*

Violoncello

pp

303

cresc.

rallent.

al - - - - - **Meno vivo**, ♩ = ca. 120

312

f dim. *pp* *p*

f, in rilievo

320

332

Vivacissimo, agitato, ♩ = ca. 160

un poco allarg.

ff *p sub.*

cresc.

342

♩ = 150

f *sf* *p* *f*

(lunga)

rallent.

p *f* *p* *mp* *mf* *f* *mf* 2nd Vin.

Violoncello

a tempo (Tempo I., $\text{♩} = 140$)

355 *p*

poco - a - poco -

363 *rallent.*

pizz.

(arco) *p* *mf*

$\text{♩} = 120$

a tempo ($\text{♩} = 140$)

1st Vln. *pizz.* *arco* *poco rall.*

sf *mf*

381 *poco a poco rallent.*

dim.

Lento, $\text{♩} = 90$

2nd Vln. *pp*

II

Mesto, $\text{♩} = 96$

mf, espr.

7 *f*

12 *dim.* *p* *piu p*

2nd Vln.

Violoncello

Marcia

♩ = 116

f, risoluto, ben marcato 21

mf 25 *f meno f*

mp *f* *mf* *mp*

30 *dim.* *p* *più p* *mp cant.*

35 *f* *mf* *f*

39 poco a poco più animato.

43 *molto marcato* *Risoluto* *trm* *trm*

49 *cresc.* *ff ff* *Tempo I.* *♩ = 116*

f *trm* *trm* *trm* *mp* *sf* *sf* *tornando poco*

55 *a poco* *al* *Meno mosso*, *♩ = 104*

dim. *p* *mf*

Violoncello

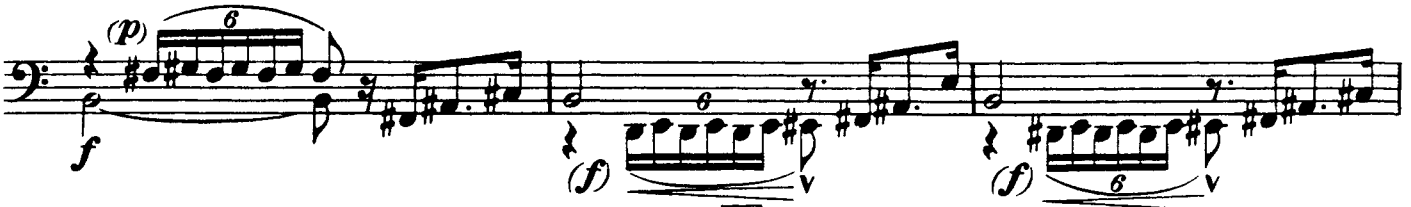
59



63



67



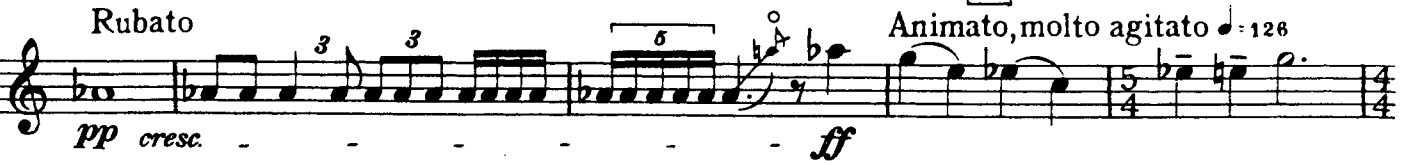
73



Ancora meno mosso $\text{♩} = \text{ca. } 96$



83



89



94



99

Molto vivace, agitato e rubato $\text{♩} = 200$



1st Vln.

Violoncello

allarg.-

106 *ff* *f* *dim.*

Meno mosso
(quasi cadenza, un poco rubato)

p

117

f

rallent. . . Tempo I.

p *pp* *p, ma ben*

123

marc. *trm*

130

mf *trm* *dim.* *trm* *trm* *p* *f* *mf*

mp *p* *ff* *mf*

138

dim. *p* *Vla.*

mp, cantab.

mf *f*

143

mf

147

poco a poco più animato

Violoncello

153 **Risolto** $\text{♩} = 126$
molto *marcatissimo*

159 **Tempo I.** $\text{♩} = 116$
ff *ff* *f* *f* *mf*
un poco accel. *a tempo*

163 *mf* *f* *ff* *mf*
cresc.

168 *f* *mf*
rall. *al - Meno mosso* $\text{♩} = 104$

(p) *f*
cresc.

179 *(p)* *f*
poco allarg. *(sempre f)* *più f*

186 *mf* *dim.* *pizz.* *pizz.* *poco rall.*
(arco)

Violoncello

III

Mesto, $\text{♩} = 96$

Burletta

Moderato $\text{♩} = 90$
au talon

Un poco più mosso, $\text{♩} = 100$

Violoncello

46

tempo $\text{♩} = 100$
punta d'arco

50

Measures 46-50: Bass clef, 4/4 time. Measure 46 starts with a *p* dynamic. The music consists of eighth and sixteenth notes. Measure 50 ends with a *mp* dynamic.

au talon

mf in rilievo

Measures 51-60: Bass clef, 4/4 time. Measure 51 starts with *mf* in rilievo. Measure 59 has a *sim.* (sforzando) marking. Measure 60 has a *ff* dynamic.

60

Tempo I. $\text{♩} = 90$

Measures 61-70: Bass clef, 4/4 time. Measure 61 has a *mf* dynamic. Measure 62 has a *f* dynamic. Measure 70 has a *p* dynamic.

*mf**mp**p*

69

Via.

rallent.

Andantino, $\text{♩} = 70$

Measures 71-74: Bass clef, 4/4 time. Measure 71 has a *p* dynamic. Measure 72 has a *p* dynamic. Measure 73 has a *p* dynamic. Measure 74 has a *p* dynamic.

*p**p*

74

dolce

Measures 75-78: Bass clef, 4/4 time. Measure 75 has a *p* dynamic. Measure 76 has a *p* dynamic. Measure 77 has a *p* dynamic. Measure 78 has a *p* dynamic.

78

più *p*

II

82

mf

Measures 79-82: Bass clef, 4/4 time. Measure 79 has a *p* dynamic. Measure 80 has a *p* dynamic. Measure 81 has a *p* dynamic. Measure 82 has a *mf* dynamic.

87

*f**mp**p*

Measures 83-87: Bass clef, 4/4 time. Measure 83 has a *f* dynamic. Measure 84 has a *mp* dynamic. Measure 85 has a *p* dynamic. Measure 86 has a *p* dynamic. Measure 87 has a *p* dynamic.

91

*mf**p**pp*

Measures 88-91: Bass clef, 4/4 time. Measure 88 has a *mf* dynamic. Measure 89 has a *p* dynamic. Measure 90 has a *p* dynamic. Measure 91 has a *pp* dynamic.

rallent.

1st Vln.

pp

Violoncello

♩ = 100
pizz. ^{*)} 0

Tempo I. ♩ = 90

97

f ff mf f sf ff f sf

102

Più lento, espressivo ♩ = 84

1st Viol. 

ff p

Tempo I., ♩ = 90

107

f mf

110

Un poco più mosso ♩ = 100

p mp

115

mf mp mf mp p mf

arco 3 pizz. arco 3 pizz. arco 3

mf p f mf p mf

119

accel. pizz. arco 3

p p mf

tornando al tempo ♩ = 100

pizz. 123

f p f p



*) 0 indicates a strong pizzicato so that the string rebounds off the fingerboard

127
mf

131
accel.
arco
f *mf* *mp*

135
Andantino, ♩ = 70
p

140
f *p* *f*

145
Tempo I. (♩ = 96)
pp *f*
tr
gliss.

mf *mp* *p*

151
au talon
pizz.
mf *p*
mf *p*
2nd Viol.

Violoncello

IV

Mesto, $\text{♩} = 88$

1st Vln.

p, ma espr. *p, ma espr.* *mp*

cresc. *f* *pp*

p *cresc.*

mf *pp* *f* *p* *f* *mf*

f *p*

pp *ppp*

p *pp*

p *mf* *ff*

mf *pp* *p*

mp *pp* *p* *mf* *p* *ff* *p*

p *pizz.*