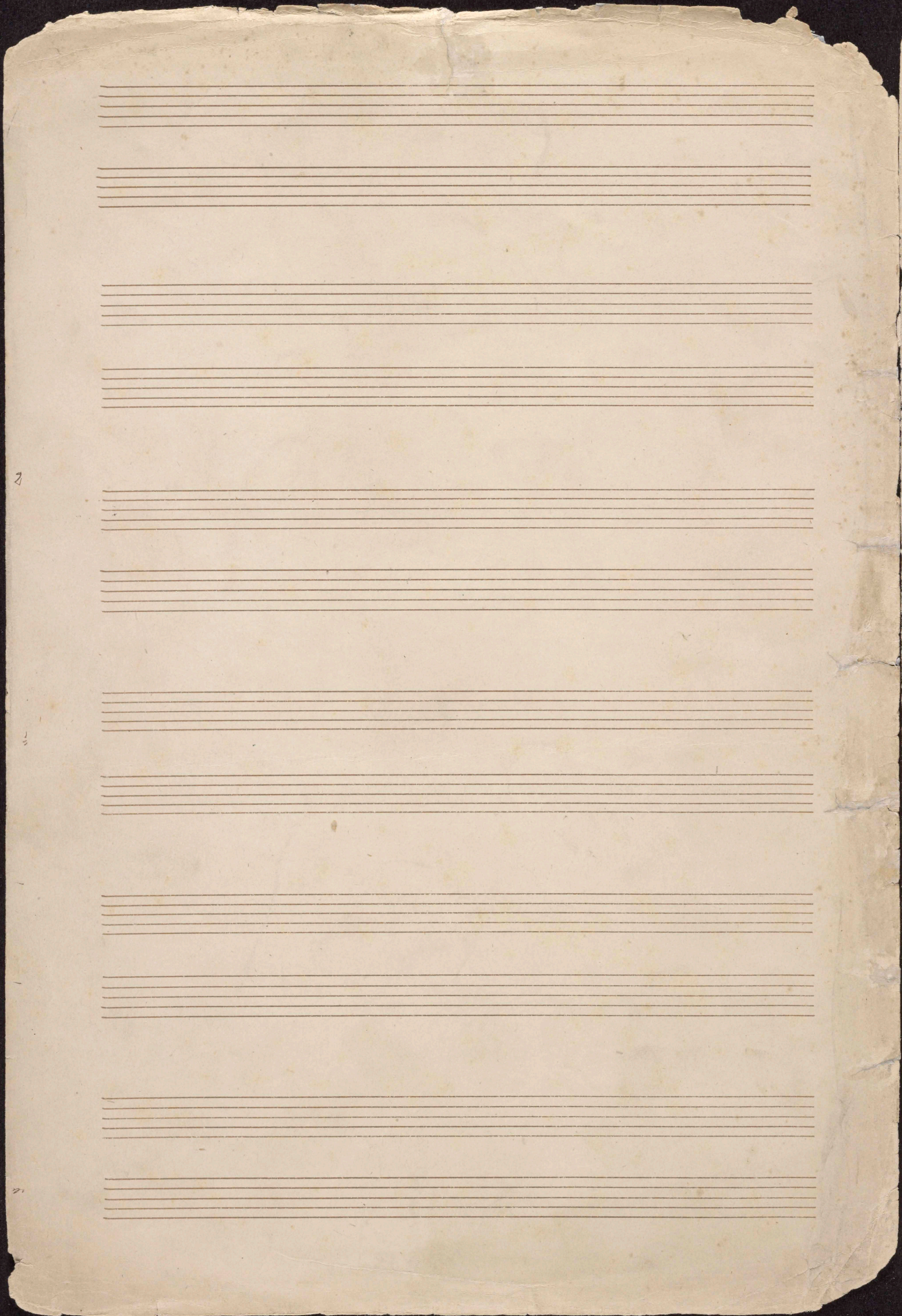


1^{re} Trio. en Sol. pour
Piano, Violon, Violoncelle //

Beaucoup de notes accompagnées de
beaucoup d'amitié, offert par l'auteur
à son professeur. *Marie Anne le Douarin*

Ach. Heussy
D.





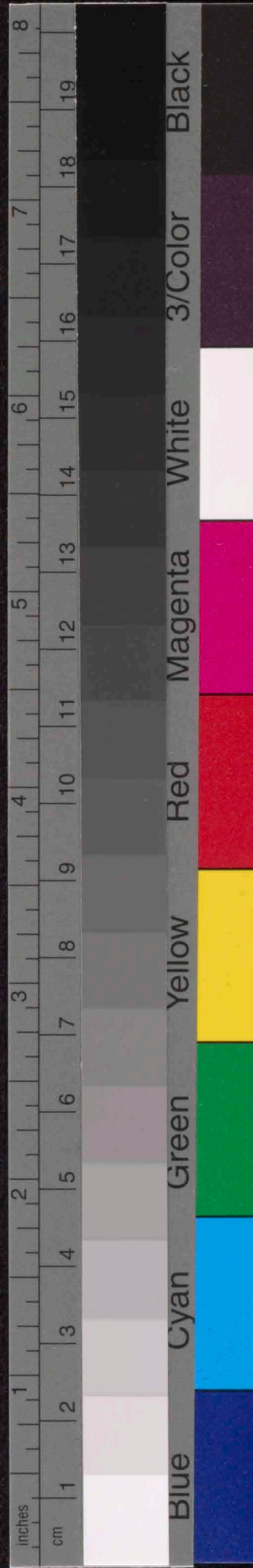
2

3

4

Chodanino con moto allegro.

(1. Part.)





pp

pp

diminuendo.

mf

diminuendo.



Handwritten musical notation on a two-staff system. The top staff uses a treble clef and the bottom staff uses a bass clef. The music features a melodic line in the treble with various note values and rests, and a more complex accompaniment in the bass with many beamed notes and slurs.

Handwritten musical notation on a two-staff system. The top staff uses a treble clef and the bottom staff uses a bass clef. The music continues with a melodic line in the treble and a complex accompaniment in the bass.

Handwritten musical notation on a two-staff system. The top staff uses a treble clef and the bottom staff uses a bass clef. The music continues with a melodic line in the treble and a complex accompaniment in the bass.

Handwritten musical notation on a two-staff system. The top staff uses a treble clef and the bottom staff uses a bass clef. The music continues with a melodic line in the treble and a complex accompaniment in the bass.

Handwritten musical notation on a two-staff system. The top staff uses a treble clef and the bottom staff uses a bass clef. The music continues with a melodic line in the treble and a complex accompaniment in the bass.

Handwritten musical notation on a two-staff system. The top staff uses a treble clef and the bottom staff uses a bass clef. The music continues with a melodic line in the treble and a complex accompaniment in the bass.



I

res cendo. et. piu. mosso.

res cendo. et. piu. mosso.



Crescendo

Handwritten musical notation for the first system, featuring treble and bass staves with notes, rests, and dynamic markings.

Crescendo

Handwritten musical notation for the second system, featuring treble and bass staves with notes and rests.

Allegro

Handwritten musical notation for the third system, featuring treble and bass staves with notes, rests, and dynamic markings.

Allegro

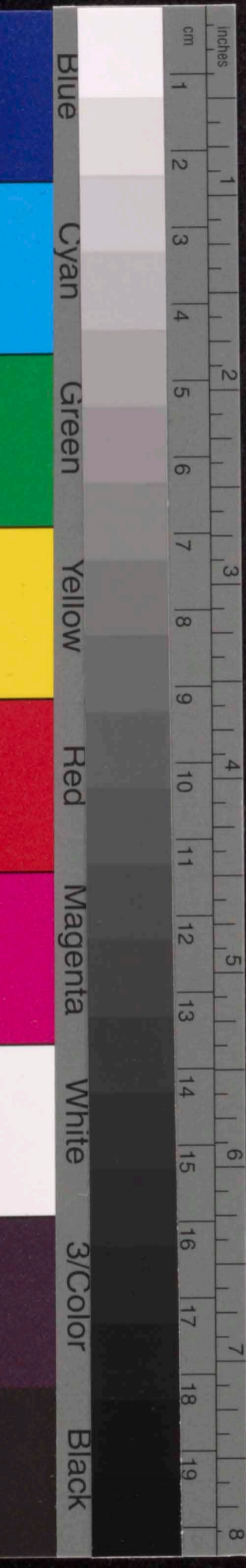
Handwritten musical notation for the fourth system, featuring treble and bass staves with notes and rests.

diminuendo

Handwritten musical notation for the fifth system, featuring treble and bass staves with notes and rests.

diminuendo

Handwritten musical notation for the sixth system, featuring treble and bass staves with notes and rests.



es - - es - - do - - - f

The image shows a page of handwritten musical notation on aged paper. The notation is arranged in six systems, each consisting of two staves (treble and bass clefs). The music includes various note values, rests, and dynamic markings such as *ff* (fortissimo) and *mf* (mezzo-forte). There are also some handwritten annotations and slurs. The paper shows signs of age, including some staining and wear at the edges.



Handwritten musical notation for the first system, featuring a treble and bass staff with various notes and rests.

Handwritten musical notation for the second system, including a treble staff with a *P* dynamic marking and a bass staff with notes.

Handwritten musical notation for the third system, with *diminuendo* and *Pizz* markings.

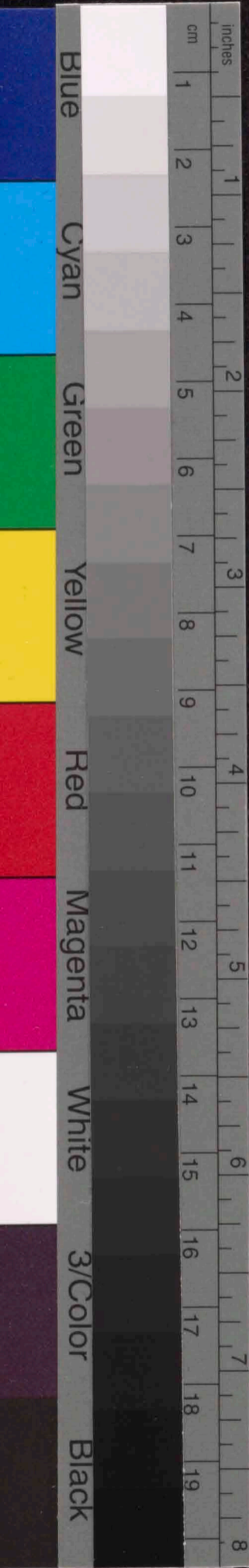
Handwritten musical notation for the fourth system, featuring a large slur and *diminuendo* marking.

Un poco Rallentando

Handwritten musical notation for the fifth system, including *Pizz* and *Arco* markings.

Un poco Rallentando

Handwritten musical notation for the sixth system, with *pp* dynamic marking and a large slur.



Andante

mf

p



crescendo.

Handwritten musical notation for the first system, consisting of two staves. The top staff is in treble clef and the bottom in bass clef. Both staves feature a series of notes grouped into triplets, indicated by a '3' above the notes and a slur. The notes are connected by a long slur across the system.

Handwritten musical notation for the second system, consisting of two staves. The top staff continues the melodic line with slurs and triplets. The bottom staff contains chordal accompaniment with dynamic markings such as *crescendo* and *ff* (fortissimo).

Handwritten musical notation for the third system, consisting of two staves. The top staff shows a rhythmic pattern with slurs and triplets. The bottom staff continues the accompaniment with similar rhythmic patterns.

Handwritten musical notation for the fourth system, consisting of two staves. A percentage sign (%) is written in the middle of the top staff. The notation includes slurs, triplets, and dynamic markings like *ff* and *mf*.

Handwritten musical notation for the fifth system, consisting of two staves. The top staff features a melodic line with slurs and triplets. The bottom staff provides accompaniment with slurs and triplets.

Handwritten musical notation for the sixth system, consisting of two staves. The top staff continues the melodic line with slurs and triplets. The bottom staff continues the accompaniment with slurs and triplets.



diminuendo

Handwritten musical notation for the first system, featuring treble and bass staves with notes, rests, and dynamic markings. The word "diminuendo" is written above the treble staff.

diminuendo

Handwritten musical notation for the second system, featuring treble and bass staves with notes, rests, and dynamic markings. The word "diminuendo" is written above the treble staff.

Handwritten musical notation for the third system, featuring treble and bass staves with notes and rests.

Handwritten musical notation for the fourth system, featuring treble and bass staves with notes, rests, and dynamic markings.

Handwritten musical notation for the fifth system, featuring treble and bass staves with notes and rests.

Handwritten musical notation for the sixth system, featuring treble and bass staves with notes, rests, and dynamic markings.



Primo Tempo.

Handwritten musical notation for the first system, featuring treble and bass staves. The music includes notes, rests, and dynamic markings such as *pp*. There are also some numerical annotations like '3' and '8' above notes.

Primo Tempo.

Handwritten musical notation for the second system, including treble and bass staves. It features notes, rests, and dynamic markings such as *pp* and *comp*. The notation includes various rhythmic values and accidentals.

Handwritten musical notation for the third system, showing treble and bass staves with notes and rests. The notation is dense with notes and includes some slurs.

Handwritten musical notation for the fourth system, featuring treble and bass staves with notes, rests, and dynamic markings like *pp*. The notation includes various rhythmic values and accidentals.

Handwritten musical notation for the fifth system, including treble and bass staves with notes, rests, and dynamic markings like *pp* and *mf*. The notation includes various rhythmic values and accidentals.

Handwritten musical notation for the sixth system, showing treble and bass staves with notes and rests. The notation includes various rhythmic values and accidentals.



Handwritten musical notation on a five-line staff. The system includes a treble clef and a bass clef. The key signature consists of two sharps (F# and C#). The notation includes various rhythmic values such as eighth and sixteenth notes, along with rests and slurs. A dynamic marking 'mf' is written at the end of the system.

Handwritten musical notation on a five-line staff. The system includes a treble clef and a bass clef. The key signature consists of two sharps (F# and C#). The notation includes various rhythmic values such as eighth and sixteenth notes, along with rests and slurs.

Handwritten musical notation on a five-line staff. The system includes a treble clef and a bass clef. The key signature consists of two sharps (F# and C#). The notation includes various rhythmic values such as eighth and sixteenth notes, along with rests and slurs. A dynamic marking 'p' is written at the end of the system.

Handwritten musical notation on a five-line staff. The system includes a treble clef and a bass clef. The key signature consists of two sharps (F# and C#). The notation includes various rhythmic values such as eighth and sixteenth notes, along with rests and slurs.

Handwritten musical notation on a five-line staff. The system includes a treble clef and a bass clef. The key signature consists of two sharps (F# and C#). The notation includes various rhythmic values such as eighth and sixteenth notes, along with rests and slurs. A dynamic marking 'f' is written at the end of the system.

Handwritten musical notation on a five-line staff. The system includes a treble clef and a bass clef. The key signature consists of two sharps (F# and C#). The notation includes various rhythmic values such as eighth and sixteenth notes, along with rests and slurs. A dynamic marking 'f' is written at the end of the system.



Allegro.

Handwritten musical notation for the first system, featuring treble and bass staves with notes, rests, and dynamic markings.

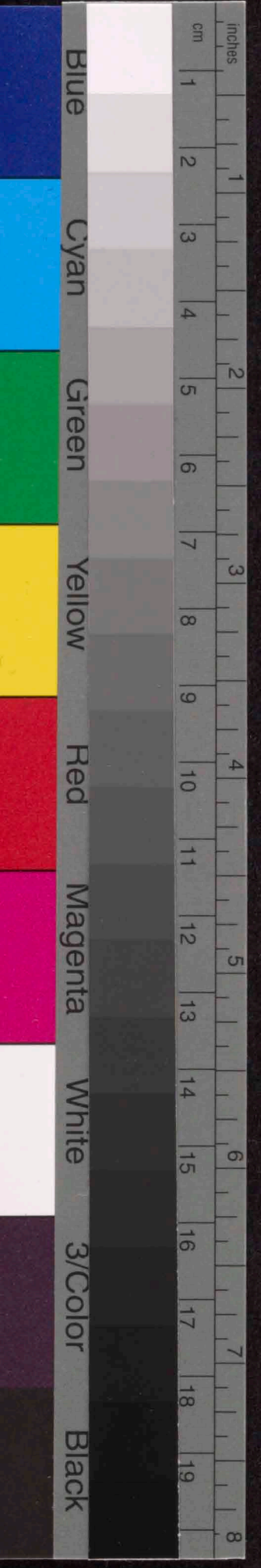
Allegro.

Handwritten musical notation for the second system, including treble and bass staves with various musical symbols and a 'p' dynamic marking.

A rectangular section of handwritten musical notation, possibly a separate system or a correction, with treble and bass staves.

Handwritten musical notation for the third system, featuring treble and bass staves with notes and dynamic markings like 'crescendo' and 'Allegro'.

Handwritten musical notation for the fourth system, including treble and bass staves with notes and dynamic markings.



Handwritten musical notation system 1, consisting of two staves. The top staff is in treble clef and the bottom in bass clef. Both are in G major (one sharp). The music features a melodic line in the treble and a more rhythmic accompaniment in the bass.

Handwritten musical notation system 2, consisting of two staves. The top staff is in treble clef and the bottom in bass clef. The music continues with similar melodic and accompanimental lines.

Handwritten musical notation system 3, consisting of two staves. The top staff is in treble clef and the bottom in bass clef. This system shows more complex rhythmic patterns and some chromatic movement.

Handwritten musical notation system 4, consisting of two staves. The top staff is in treble clef and the bottom in bass clef. The music features a mix of eighth and sixteenth notes.

Handwritten musical notation system 5, consisting of two staves. The top staff is in treble clef and the bottom in bass clef. The word *legato* is written above the treble staff, and *legato* with a *P* dynamic marking is written above the bass staff.

Handwritten musical notation system 6, consisting of two staves. The top staff is in treble clef and the bottom in bass clef. This system includes various dynamic markings such as *pp*, *p*, *f*, and *ff*.



pp

pp

pp



Handwritten musical notation on a five-line staff. The top staff uses a treble clef and the bottom staff uses a bass clef. The music consists of several measures with various note values, including eighth and sixteenth notes, and rests. There are slurs and dynamic markings throughout the system.

Handwritten musical notation on a five-line staff. The top staff uses a treble clef and the bottom staff uses a bass clef. The music consists of several measures with various note values, including eighth and sixteenth notes, and rests. There are slurs and dynamic markings throughout the system.

Handwritten musical notation on a five-line staff. The top staff uses a treble clef and the bottom staff uses a bass clef. The music consists of several measures with various note values, including eighth and sixteenth notes, and rests. There are slurs and dynamic markings throughout the system.

Handwritten musical notation on a five-line staff. The top staff uses a treble clef and the bottom staff uses a bass clef. The music consists of several measures with various note values, including eighth and sixteenth notes, and rests. There are slurs and dynamic markings throughout the system.

Handwritten musical notation on a five-line staff. The top staff uses a treble clef and the bottom staff uses a bass clef. The music consists of several measures with various note values, including eighth and sixteenth notes, and rests. There are slurs and dynamic markings throughout the system.

Handwritten musical notation on a five-line staff. The top staff uses a treble clef and the bottom staff uses a bass clef. The music consists of several measures with various note values, including eighth and sixteenth notes, and rests. There are slurs and dynamic markings throughout the system.



Handwritten musical notation on two staves. The top staff is in treble clef and the bottom in bass clef. The key signature has one sharp (F#) and the time signature is 3/4. The notation includes various note values and rests.

Handwritten musical notation on two staves. The top staff is in treble clef and the bottom in bass clef. The key signature has one sharp (F#) and the time signature is 3/4. The notation includes various note values and rests.

Handwritten musical notation on two staves. The top staff is in treble clef and the bottom in bass clef. The key signature has one sharp (F#) and the time signature is 3/4. The notation includes various note values and rests.

Handwritten musical notation on two staves. The top staff is in treble clef and the bottom in bass clef. The key signature has one sharp (F#) and the time signature is 3/4. The notation includes various note values and rests.

Handwritten musical notation on two staves. The top staff is in treble clef and the bottom in bass clef. The key signature has one sharp (F#) and the time signature is 3/4. The notation includes various note values and rests.

Handwritten musical notation on two staves. The top staff is in treble clef and the bottom in bass clef. The key signature has one sharp (F#) and the time signature is 3/4. The notation includes various note values and rests.



Handwritten musical notation system 1, consisting of a treble clef staff and a bass clef staff. The music is in G major (one sharp) and 2/4 time. It features a melody in the treble staff with eighth and sixteenth notes, and a bass line with chords and eighth notes. There are several slurs and ties.

Handwritten musical notation system 2, continuing the piece. The treble staff has a more active melody with many sixteenth notes, while the bass staff provides a steady accompaniment with eighth notes and chords.

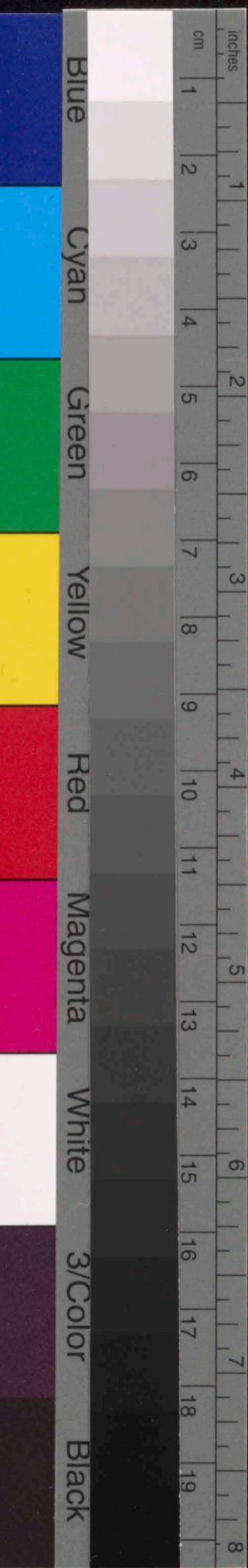
Handwritten musical notation system 3. The treble staff shows a melodic line with some slurs, and the bass staff has a complex accompaniment with many beamed sixteenth notes.

Handwritten musical notation system 4. The treble staff has a melody with some rests, and the bass staff continues with a rhythmic accompaniment of eighth notes.

Handwritten musical notation system 5. The treble staff has a melody with a few slurs, and the bass staff has a more active accompaniment with many sixteenth notes.

Handwritten musical notation system 6, the final system on the page. It shows a concluding melodic phrase in the treble staff and a final accompaniment in the bass staff.





Handwritten musical notation on a grand staff. The upper staff contains a treble clef and a single note with a fermata above it, marked with the dynamic *ppp*. The lower staff contains a bass clef and a series of notes, including a triplet of eighth notes, followed by a melodic line. A large slur spans across both staves.

Handwritten musical notation on a grand staff. The upper staff contains a treble clef and a melodic line with a fermata. The lower staff contains a bass clef and a melodic line with a fermata. The dynamic *ppp* is written between the staves.

Eight sets of empty grand staves, each consisting of a treble clef staff and a bass clef staff, arranged vertically down the page.



