

Corno 1^o in Fa

Preludio, Corale e Fuga.

©^{no} Respighi

Preudio =

Lento

do#

la

Handwritten musical score for 'Preudio'. The score is written on a grand staff (treble and bass clefs) in 4/4 time. It begins with a tempo marking of *Lento* and a key signature of one sharp (F#). The first system contains two staves of music, with a *pp.* dynamic marking. The second system features a *Presto* tempo change and includes measure numbers 20 and 16. The third system continues with *p.* dynamics. The fourth system starts with measure number 26 and includes a *mf.* dynamic. The fifth system contains measure numbers 3 and 11, with *p.* dynamics. The sixth system starts with measure number 12 and includes a *cresc. poco a poco* marking. The seventh system features a *mf. cresc.* marking. The final system concludes the piece with a key signature change to two sharps (F# and C#).

molto rit. ---

Corale Lento

(5)

ff

segue

4
(6)

legato

(7)

(8)

Con Sordino

Trova

(9) Via Jordino

5

all: $\frac{6}{8}$ $\frac{4}{4}$ $\frac{3}{4}$ u - | 6

f. $\frac{5}{4}$ $\frac{4}{4}$ $\frac{3}{4}$ $\frac{2}{4}$ $\frac{1}{4}$ $\frac{3}{4}$ $\frac{2}{4}$ $\frac{1}{4}$ | 5

(10) $\frac{3}{4}$ $\frac{2}{4}$ $\frac{1}{4}$ $\frac{3}{4}$ $\frac{2}{4}$ $\frac{1}{4}$ $\frac{3}{4}$ $\frac{2}{4}$ $\frac{1}{4}$ $\frac{3}{4}$ $\frac{2}{4}$ $\frac{1}{4}$ |

$\frac{3}{4}$ $\frac{2}{4}$ $\frac{1}{4}$ $\frac{3}{4}$ $\frac{2}{4}$ $\frac{1}{4}$ $\frac{3}{4}$ $\frac{2}{4}$ $\frac{1}{4}$ |

$\frac{3}{4}$ $\frac{2}{4}$ $\frac{1}{4}$ $\frac{3}{4}$ $\frac{2}{4}$ $\frac{1}{4}$ $\frac{3}{4}$ $\frac{2}{4}$ $\frac{1}{4}$ $\frac{3}{4}$ $\frac{2}{4}$ $\frac{1}{4}$ |

(11) $\frac{3}{4}$ $\frac{2}{4}$ $\frac{1}{4}$ $\frac{3}{4}$ $\frac{2}{4}$ $\frac{1}{4}$ $\frac{3}{4}$ $\frac{2}{4}$ $\frac{1}{4}$ $\frac{3}{4}$ $\frac{2}{4}$ $\frac{1}{4}$ | 5

(12) $\frac{3}{4}$ $\frac{2}{4}$ $\frac{1}{4}$ $\frac{3}{4}$ $\frac{2}{4}$ $\frac{1}{4}$ $\frac{3}{4}$ $\frac{2}{4}$ $\frac{1}{4}$ $\frac{3}{4}$ $\frac{2}{4}$ $\frac{1}{4}$ | *Meno mosso*

$\frac{3}{4}$ $\frac{2}{4}$ $\frac{1}{4}$ $\frac{3}{4}$ $\frac{2}{4}$ $\frac{1}{4}$ $\frac{3}{4}$ $\frac{2}{4}$ $\frac{1}{4}$ $\frac{3}{4}$ $\frac{2}{4}$ $\frac{1}{4}$ | *anim.*

2

v.s.

Empty musical staves at the bottom of the page.

6

Handwritten musical staff with notes and a *rit.* marking.

(13)

Handwritten musical staff with notes and a *dim.* marking.

Handwritten musical staff with notes and dynamic markings.

(14)

Handwritten musical staff with notes and dynamic markings.

Handwritten musical staff with notes and a fermata.

Handwritten musical staff with notes and a *dim.* marking.

(15)

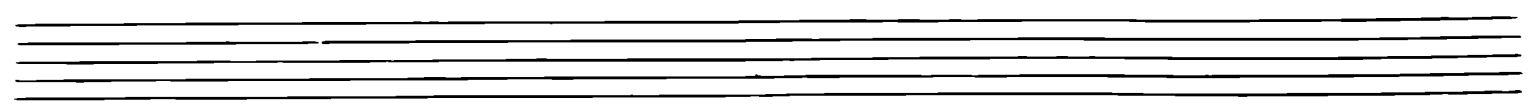
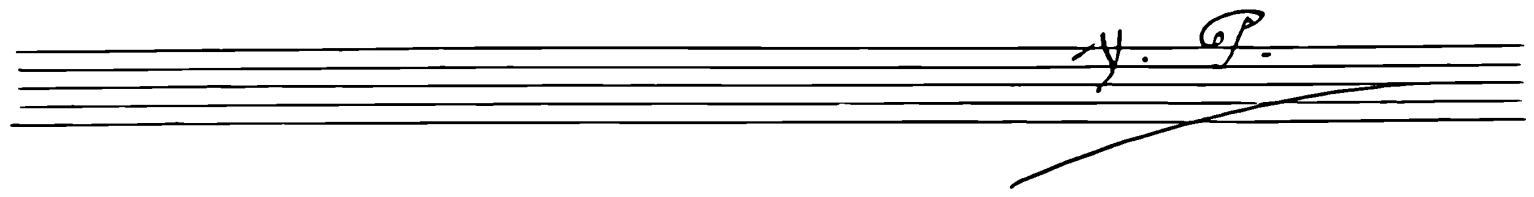
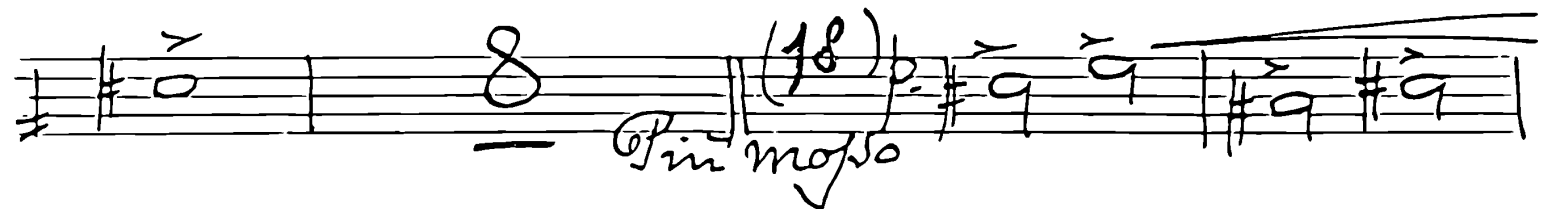
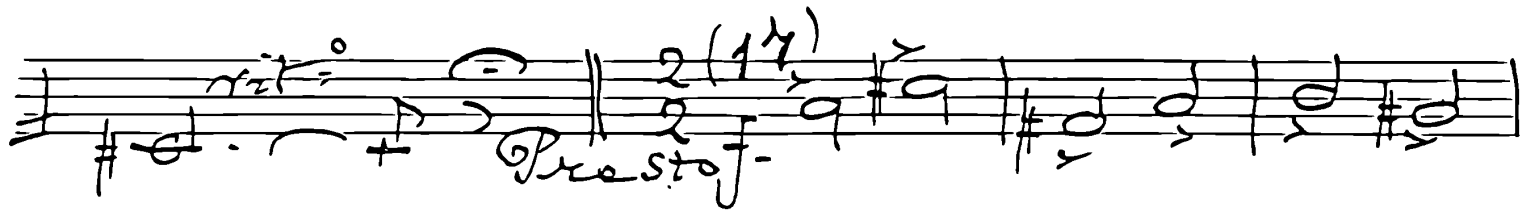
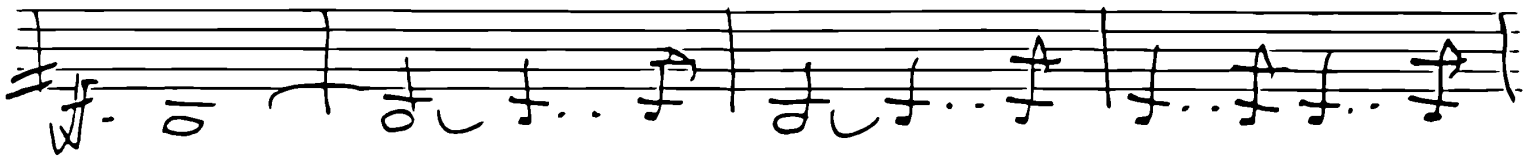
Handwritten musical staff with notes, a *tempo* marking, and a *molto fast* marking.

(16)

Handwritten musical staff with notes and dynamic markings.

Handwritten musical staff with notes and dynamic markings.

Handwritten musical staff with notes and dynamic markings.



Largamente

Handwritten musical score for a piece titled "Largamente". The score consists of ten staves of music. The first staff begins with a treble clef, a key signature of one sharp (F#), and a common time signature (C). The tempo marking "Largamente" is written above the first staff. The music is written in a single melodic line. The second staff has a fermata over the final note. The third staff continues the melody. The fourth staff has a fermata over the first two notes, followed by a measure with a dynamic marking of "ff" and a measure with a fermata. The fifth staff continues the melody. The sixth staff has a fermata over the first two notes. The seventh staff has a fermata over the first two notes, followed by a measure with a dynamic marking of "ff" and a measure with a fermata. The eighth staff has a fermata over the first two notes, followed by a measure with a dynamic marking of "ff" and a measure with a fermata. The ninth staff has a fermata over the first two notes, followed by a measure with a dynamic marking of "ff" and a measure with a fermata. The tenth staff has a fermata over the first two notes, followed by a measure with a dynamic marking of "ff" and a measure with a fermata. The piece concludes with a final fermata over the last note.

dim - - Lento assai

