

253519
LES NATIONS

I

Révision par
JULIEN TIERSOT

FRANÇOIS COUPERIN
(1668-1733)

La Française

I

1^{er} VIOLON

Gravement

f

(Rall.) *f*

mf

p

cresc.

f Rondement

mf Gaïment

1^{er} VIOLON

Musical notation for the first system of the 1st Violin part, consisting of five staves. The music is in G major and 2/4 time. It features various rhythmic patterns, including eighth and sixteenth notes, and trills. Dynamics include (f) and (mf).

Gravement

Musical notation for the second system of the 1st Violin part, consisting of two staves. The tempo is marked "Gravement" and the time signature changes to 2/2. The music is in G major. Dynamics include (f).

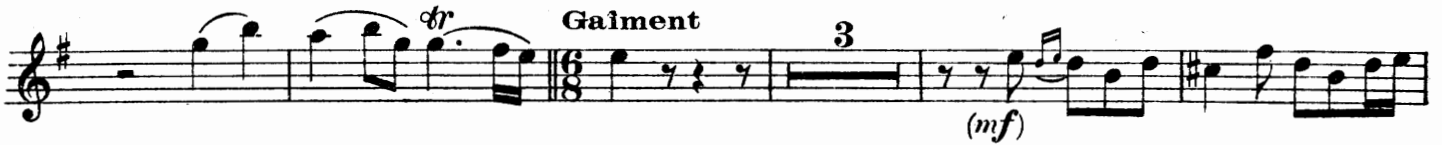
Vivement

Musical notation for the third system of the 1st Violin part, consisting of five staves. The tempo is marked "Vivement" and the time signature changes to 4/4. The music is in G major. Dynamics include (mf) and (f).

AIR

Gracieusement

4



1^{er} VIOLON

II

ALLEMANDE

Sans lenteur

f

1^a

1^{re} fois

Pour finir

PREMIÈRE COURANTE

Noblement

(mf)

SECONDE COURANTE

Un peu moins vite

(p)

Reprenez la
1^{re} Courante

SARABANDE

Gravement

(mf)

GIGUE

Gaiement

Musical score for Gigue, 1st Violin part. The score is written in treble clef with a key signature of one sharp (F#) and a 6/4 time signature. It consists of six staves of music. The first staff begins with the tempo marking 'Gaiement' and a dynamic marking of *f*. The second staff contains a first ending bracket labeled '1^a' and a second ending bracket labeled '2^a'. The third staff includes trill markings (*tr*) and a dynamic marking of *f*. The fourth staff includes a trill marking (*tr*) and a dynamic marking of *f*. The fifth staff includes a trill marking (*tr*) and a dynamic marking of *f*. The sixth staff includes trill markings (*tr*) and a dynamic marking of *f*. The score also includes dynamic markings *doux*, *(cresc.)*, and *(f)*.

CHACONNE OU PASSACAILLE

Modérément

Musical score for Chaconne ou Passacaille, 1st Violin part. The score is written in treble clef with a key signature of one sharp (F#) and a 3/4 time signature. It consists of four staves of music. The first staff begins with the tempo marking 'Modérément' and a dynamic marking of *f*. The second staff includes a dynamic marking of *(mf)*. The third staff includes a dynamic marking of *(mf)*. The fourth staff includes a dynamic marking of *(dim.)*.

1^{er} VIOLON

The musical score for the first violin part on page 7 consists of 12 staves of music in G major. The notation includes various dynamics and performance directions:

- Staff 1: *(p)*, *tr*
- Staff 2: *(mf)*, *tr*
- Staff 3: *dim.*, *tr*, *Vif et*, *(f)*
- Staff 4: *marqué*, *doux*
- Staff 5: *f*
- Staff 6: *doux*, *tr*, *(f)*
- Staff 7: *doux*, *tr*
- Staff 8: *f*, *tr*
- Staff 9: *tr*
- Staff 10: *tr*
- Staff 11: *tr*
- Staff 12: *(pp)*, *tr*

253519

1^{er} VIOLON

(cresc.) (sempre cresc.)
f (slarg.)

GAVOTTE

(mf)

MENUET

1^{re} fois Pour finir
Fin