

Francoise II

Александр Невский

Колыбельная

С. Прокофьев

1. Русь под игом монгольским

Tacet

2. Песня об Александре Невском

Tacet

25/11 2000г

Красноярск
акад. симфон. орк.
дир. Т. Петрова
(с. Петрова)

3. Спектакль в Петербурге

14 Largo

in 8 f

mf

mf p

f

mf

pp

15 Andante

16

in 4

pp

~~con sord.~~

ff

17 Opera

senza sord. Largo, come prima

in 8 ff

18

in 4

19

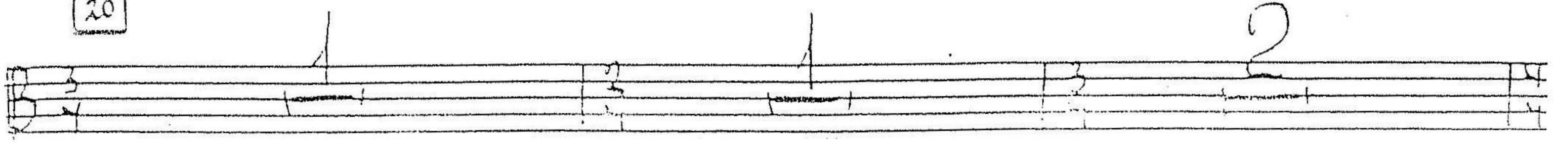
con sord.

ff pesante

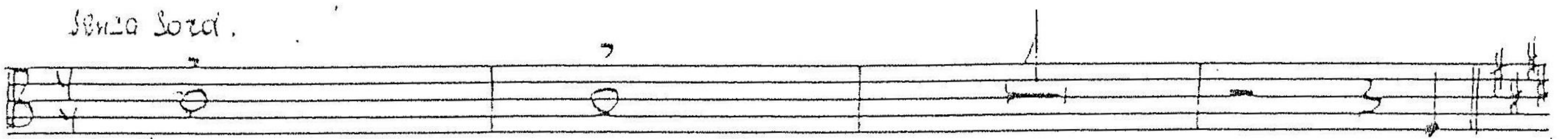
ff

Opera

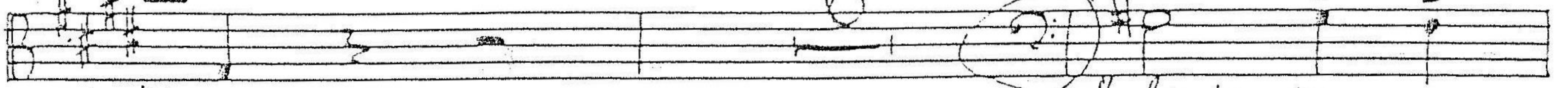
20



senza sord.



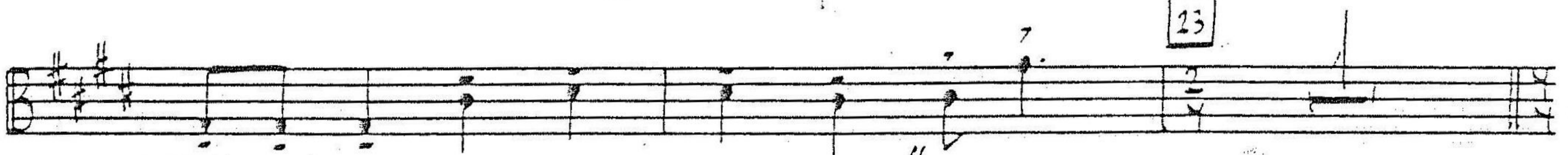
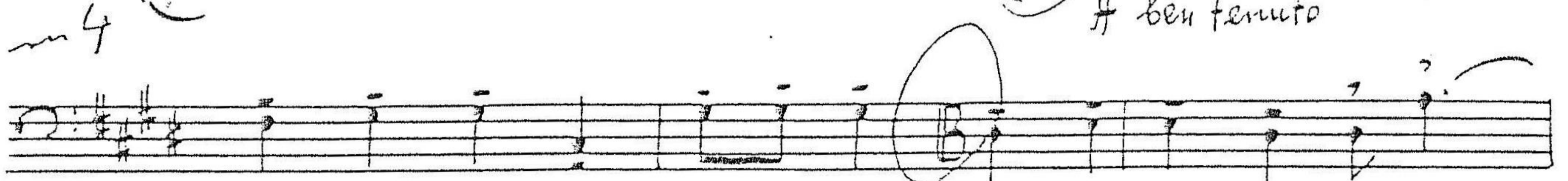
in 8 **21** Andante



22 ~~con sord.~~

pp

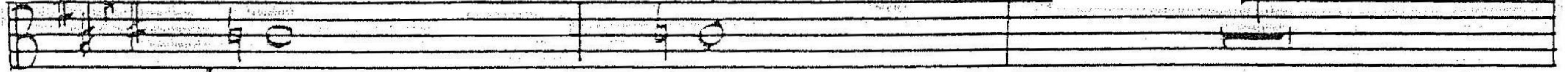
f ben tenuto



23

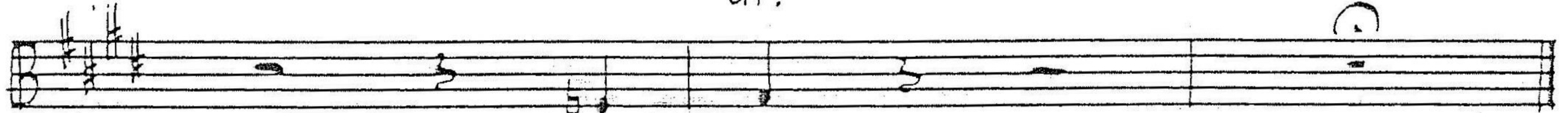
Largo

senza sord.



in 8 *f*

rit.



pp



4. *Bombarde, Magnificence*

24 *Allegro risoluto*

Musical staff with notes, rests, and dynamic markings (ff, f). Includes a large number '11' and a sharp sign (#).

Musical staff with notes, rests, and dynamic markings (ff, f).

Musical staff with notes, rests, and dynamic markings (f).

Musical staff with notes, rests, and dynamic markings (f).

25

7

Musical staff with notes, rests, and dynamic markings (ff, f).

26

Musical staff with notes, rests, and dynamic markings (f).

Musical staff with notes, rests, and dynamic markings (f).

Musical staff with notes, rests, and dynamic markings (f).

poco rit.

2

27 *a tempo*

16

Musical staff with notes, rests, and dynamic markings (ff).

28

tuba

8

Musical staff with notes, rests, and dynamic markings (ff).

29

Musical staff with notes, rests, and dynamic markings (ff).

Handwritten musical score for measures 28-31. The score consists of six staves. The key signature has two flats (B-flat and E-flat). Measure 30 is boxed and has a '7' written above it. Measure 31 is boxed and has a 'ff' dynamic marking at the end of the staff.

5. Легкое подолжье

Handwritten musical score for measure 32. The staff is labeled "32 Adagio" and "6". The key signature has three sharps (F#, C#, G#). The measure contains a long note with a fermata.

Handwritten musical score for measure 33. The staff is labeled "33" and "2". The key signature has three sharps. The measure contains a long note with a fermata. The word "Тр-не I" is written above the staff.

Handwritten musical score for measure 34. The staff is labeled "34 Moderato". The key signature has three sharps. The measure contains a long note with a fermata.

Handwritten musical score for measure 35. The staff is labeled "35 Allegro moderato" and "Tuba". The key signature has three sharps. The measure contains a long note with a fermata. The word "poco accel." is written above the staff.

Handwritten musical score for measure 36. The staff is labeled "36" and "2". The key signature has three sharps. The measure contains a long note with a fermata.

mf

37

5

Tz-ne I

3

~~senza sord.~~

38

6

Tz-ne I

39

6

40

ff pesante

OPEN

41

3

ff

senza sord.

3

CIS G15

42

accel.

con sord.

ff

senza sord.

43

Allegro

ff

Musical staff with notes and a sharp sign (#).

Musical staff with notes, a circled measure containing a sharp sign (#), and a dynamic marking *fff*.

Musical staff with notes and a dynamic marking *mf*.

Musical staff with notes, a circled measure, a dynamic marking *f*, and the tempo marking *Poco meno mosso*.

Musical staff with notes, a dynamic marking *f*, and a triplet marking *3*.

Musical staff with notes, a dynamic marking *mf*, and a dynamic marking *f*.

Musical staff with notes and a dynamic marking *f*.

Musical staff with notes, a dynamic marking *mf*, and a dynamic marking *f*.

Musical staff with notes, a circled measure, a dynamic marking *f*, and the tempo marking *Andante*.

Musical staff with notes, a dynamic marking *f*, and a circled measure.

Musical staff with notes, a dynamic marking *f*, and the tempo marking *Andante*.

Musical staff with notes, a dynamic marking *f*, and the word *Mute* written below the staff.

Empty musical staves at the bottom of the page.

Musical staff with notes and a dynamic marking of *f*.

Musical staff with notes and dynamic markings of *ff*.

Musical staff with notes and a double bar line.

Musical staff with measure numbers 56 and 57, a circled '8', the word 'Tuba', and a circled '7'.

Musical staff with measure number 58 and a dynamic marking of *ff*.

Musical staff with notes, a circled chord, and a dynamic marking of *f*.

Musical staff with notes and a dynamic marking of *f*.

Musical staff with notes and a dynamic marking of *ff*.

Musical staff with measure number 59 and a dynamic marking of *ff*.

Musical staff with notes, a circled chord, a dynamic marking of *fff*, and the instruction 'ben tenuto'.

Musical staff with notes, a circled chord, a dynamic marking of *ff*, and the instruction 'con forza'.

Musical staff with measure number 60 and a circled '7'.

61

3

Don't Fall

Musical notation for measures 61 and 62. Measure 61 features a treble clef, a key signature of one flat (B-flat), and a 3/4 time signature. It contains a half note G4, a quarter note A4, and a quarter note B4. Measure 62 continues with a half note C5, a quarter note B4, and a quarter note A4. A dynamic marking of *f* is present at the end of measure 62.

62

open 6

Musical notation for measure 62, showing a treble clef, a key signature of one flat, and a 3/4 time signature. The notes are G4, A4, and B4. A dynamic marking of *f* is present.

63

senza sord.

Musical notation for measure 63, featuring a treble clef, a key signature of one flat, and a 3/4 time signature. The notes are G4, A4, and B4. A dynamic marking of *f* is present.

Musical notation for measure 64, featuring a treble clef, a key signature of one flat, and a 3/4 time signature. The notes are G4, A4, and B4. A dynamic marking of *f* is present.

3

Musical notation for measure 65, featuring a bass clef, a key signature of one flat, and a 3/4 time signature. The notes are G3, A3, and B3. A dynamic marking of *f* is present.

64

Musical notation for measure 64, featuring a treble clef, a key signature of one flat, and a 3/4 time signature. The notes are G4, A4, and B4. A dynamic marking of *f* is present.

C

3

Musical notation for measure 65, featuring a treble clef, a key signature of one flat, and a 3/4 time signature. The notes are G4, A4, and B4. A dynamic marking of *f* is present.

65

Musical notation for measure 65, featuring a treble clef, a key signature of one flat, and a 3/4 time signature. The notes are G4, A4, and B4. A dynamic marking of *f* is present.

Musical notation for measure 66, featuring a treble clef, a key signature of one flat, and a 3/4 time signature. The notes are G4, A4, and B4. A dynamic marking of *f* is present.

Musical notation for measure 67, featuring a treble clef, a key signature of one flat, and a 3/4 time signature. The notes are G4, A4, and B4. A dynamic marking of *f* is present.

66 Adagio

Handwritten musical notation on a five-line staff. It begins with a treble clef, a key signature of two flats (B-flat and E-flat), and a 6/8 time signature. The music consists of a series of eighth and sixteenth notes, some beamed together. A dynamic marking of *f* (forte) is present. The word *pesante* is written below the staff. A circled measure contains a chord with a sharp sign. The phrase *poco rit.* (poco ritardando) is written at the end of the staff.

Handwritten musical notation on a five-line staff, continuing from the previous staff. It features a treble clef, a key signature of two flats, and a 6/8 time signature. The notation includes eighth and sixteenth notes. A circled measure contains a chord with a sharp sign. The word *eserc.* (esercizio) is written below the staff.

Handwritten musical notation on a five-line staff, starting with a circled measure containing a sharp sign. It features a treble clef, a key signature of two flats, and a 6/8 time signature. The notation includes eighth and sixteenth notes. A dynamic marking of *ff* (fortissimo) is present.

Handwritten musical notation on a five-line staff, featuring a treble clef, a key signature of two flats, and a 6/8 time signature. The notation includes eighth and sixteenth notes. A dynamic marking of *f ben tenuto* (forte, ben tenuto) is present.

Handwritten musical notation on a five-line staff, starting with a circled measure containing a sharp sign. It features a treble clef, a key signature of two flats, and a 6/8 time signature. The notation includes eighth and sixteenth notes. Dynamic markings of *f* and *mf* (mezzo-forte) are present. A circled measure contains a chord with a sharp sign.

Handwritten musical notation on a five-line staff, featuring a treble clef, a key signature of two flats, and a 6/8 time signature. The notation includes eighth and sixteenth notes. A dynamic marking of *ff* is present.

Handwritten musical notation on a five-line staff, featuring a treble clef, a key signature of two flats, and a 6/8 time signature. The notation includes eighth and sixteenth notes. A circled measure contains a chord with a sharp sign. The word *poco rit.* is written below the staff.

Handwritten musical notation on a five-line staff, starting with a circled measure containing a sharp sign. It features a treble clef, a key signature of two flats, and a 6/8 time signature. The notation includes eighth and sixteenth notes. Dynamic markings of *f* and *mp* (mezzo-piano) are present. The word *a tempo* is written below the staff.

Handwritten musical notation on a five-line staff, featuring a treble clef, a key signature of two flats, and a 6/8 time signature. The notation includes eighth and sixteenth notes. A dynamic marking of *mp* is present.

Handwritten musical notation on a five-line staff, featuring a treble clef, a key signature of two flats, and a 6/8 time signature. The notation includes eighth and sixteenth notes. A dynamic marking of *mp* is present.

Handwritten musical notation on a five-line staff, featuring a treble clef, a key signature of two flats, and a 6/8 time signature. The notation includes eighth and sixteenth notes. A dynamic marking of *mp* is present. The word *rit.* (ritardando) is written below the staff. A circled measure contains a chord with a sharp sign.

Handwritten musical notation on a five-line staff, featuring a treble clef, a key signature of two flats, and a 6/8 time signature. The notation includes eighth and sixteenth notes. A circled measure contains a chord with a sharp sign.

6. Мерное поле

Tacet.

7. Вязь Александра в Псков

79 Moderato

Musical staff with notes and a fermata marked '2'.

Musical staff with notes and a fermata marked '4'.

80

Musical staff with notes and a fermata marked '2'.

Musical staff with notes and a fermata marked '3'.

81 Allegro, ma non troppo

82

Musical staff with notes and a fermata marked '9'.

Musical staff with notes and a fermata marked '7'.

83

Musical staff with notes and a fermata marked '5'.

84 Meno mosso

Musical staff with notes and a fermata marked '8'.

85 p-tti

Musical staff with notes and a fermata marked '12'.

86

87

cop

88

Musical staff with notes and a fermata marked '8'.

89 Tuba il Tz-ne III 5 1

90 Piu largamente

ff || ben tenuto

91

ff pesante

poco allarg.

ff

ff