

# Anhang zu BWV 55

## Satz 3 in der älteren Fassung der Originalstimmen

### 3. Aria

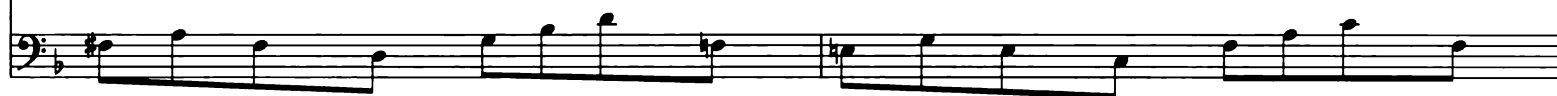
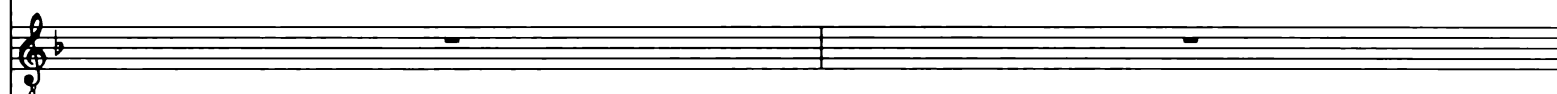
Flauto traverso



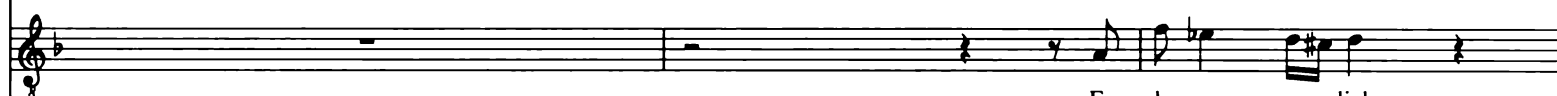
Tenore

Continuo (2x)  
Organo

3



5



Er - bar - me dich,



8



er - bar - me dich,

er - bar

me, er-bar - me dich, laß

die



11

Trä - nen dich er - wei - chen, laß sie dir ans Her - ze rei - chen, er -

This system contains measures 11 and 12. It features three staves: a treble staff with a complex melodic line, a vocal staff with lyrics, and a bass staff with a steady accompaniment. The key signature has one flat (B-flat).

13

bar - - - - - me, er-bar - me dich!

This system contains measures 13 and 14. It features three staves: a treble staff with a melodic line, a vocal staff with lyrics, and a bass staff with an accompaniment. The key signature has one flat (B-flat).

16

This system contains measures 16 and 17. It features three staves: a treble staff with a melodic line, a vocal staff that is empty, and a bass staff with an accompaniment. The key signature has one flat (B-flat).

18

This system contains measures 18 and 19. It features three staves: a treble staff with a melodic line, a vocal staff that is empty, and a bass staff with an accompaniment. The key signature has one flat (B-flat).

20

Er - bar - - me dich \_\_\_\_\_

22

\_\_\_\_\_, er - bar - - me, er-bar - me dich, laß um Je - su Chri-sti wil - len dei-nen

25

Zorn des Ei - fers stil - len, er - bar - me dich, er - bar - me dich \_\_\_\_\_

27

er - bar - me dich, laß um Je - su Chri - sti

30

wil - len dei - nen Zorn des Ei - fers stil - len, er - bar - me dich, er - bar - me

33

dich, er - bar - me dich, er - bar

35

- - me, er - bar - me dich!

38

40